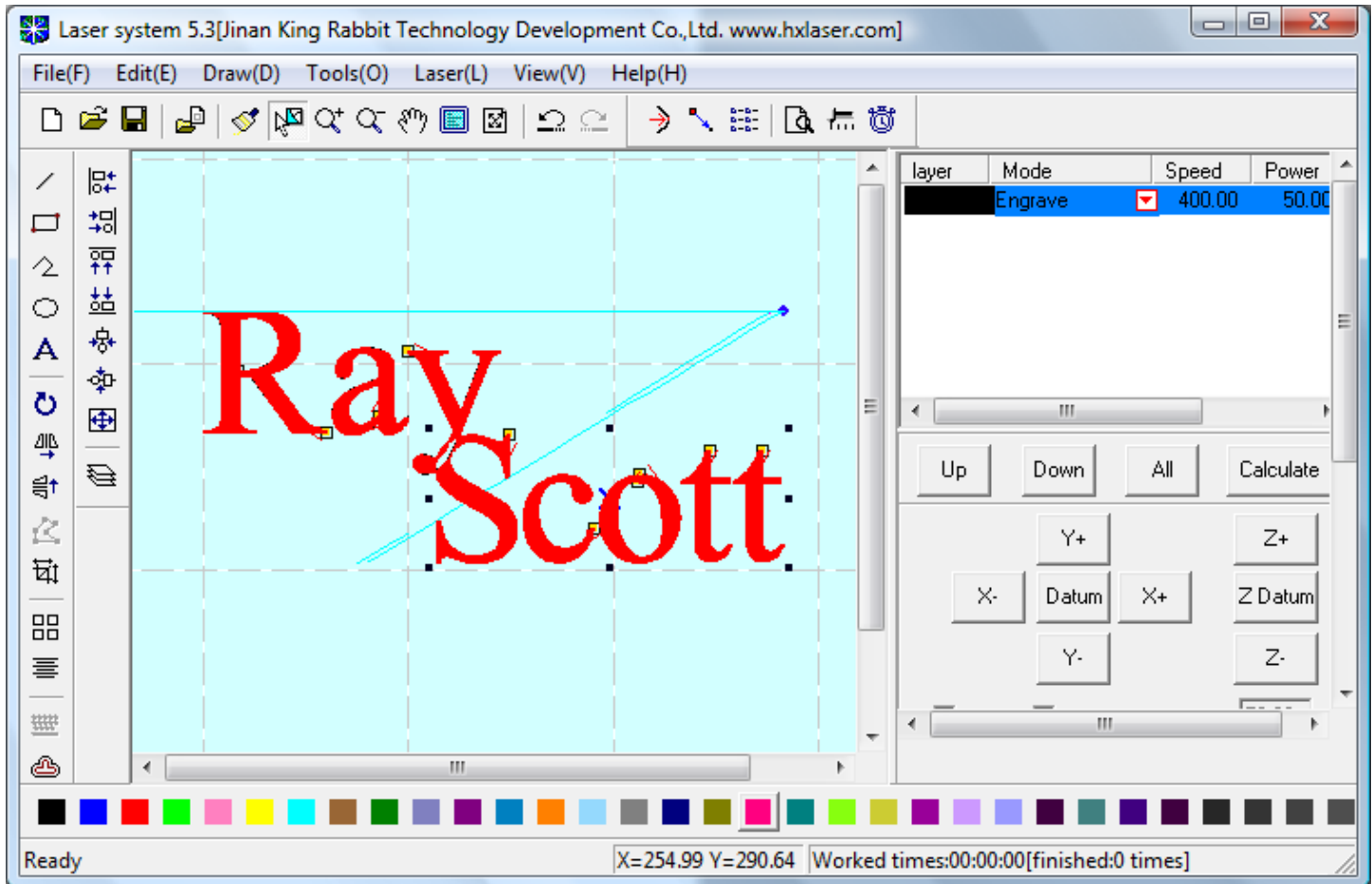
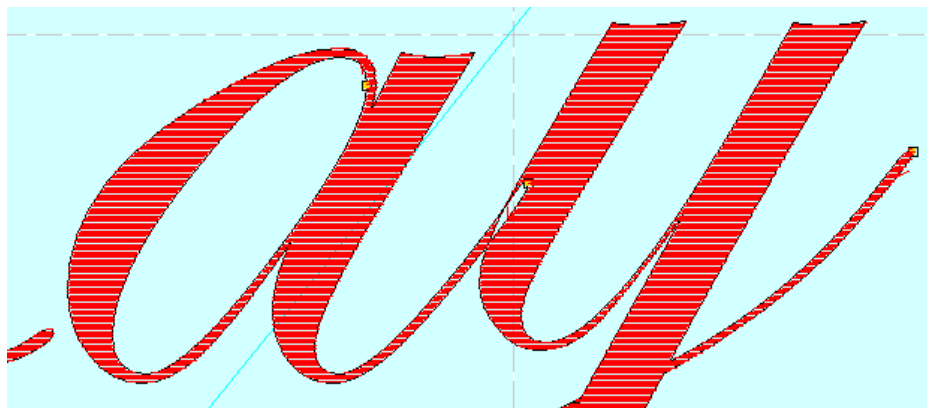


Welding Text to Eliminate the Engrave Glitch ...

We have found that LaserCut5.3 has an odd result with overlapping text. The software creates a void when attempting to engrave overlapped sections of text. The software interprets the overlap as undesired region and removes it from the engrave area. We will show the problem here and explain how to use Corel X4 to remedy the artwork.



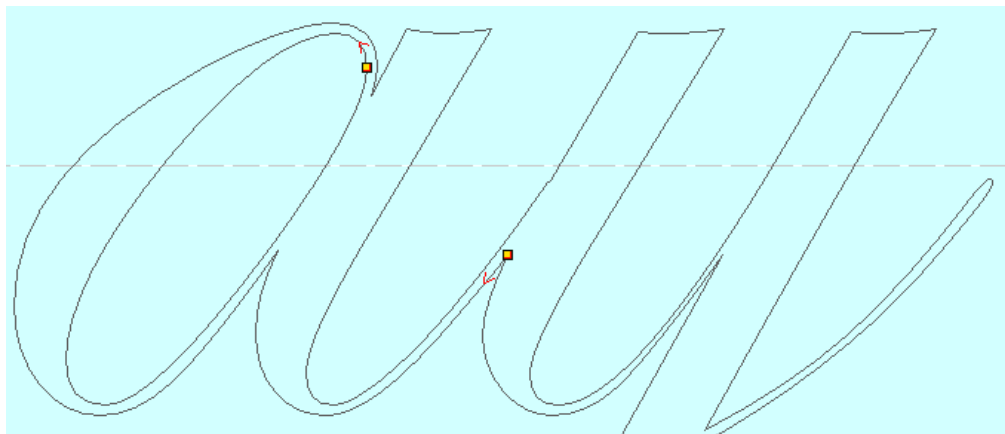
Please notice the overlapping section of the “y” and the “S”. The overlapped section is not engraved. There are some times when this effect is desirable, but it is not wanted here. The problem doesn’t happen often until you use a script font that needs to overlap the letters.



We can solve the missed engraving problem caused by the overlapping letters. We use Corel X4 to make the text artwork for us.



- 1) Use Corel X4 to draw some text. Draw the text in a large font size and a script font style. I chose a font style of “Edwardian Script” and 100 point size. Notice that the letters flow together very nicely.
- 2) We need to change the font to a line drawing by using the menu item of “Convert to Curves”. Notice that the text has actually become a vector drawing. The letters still have their complete outline.
- 3) Because each letter still has an individual outline, the engraving will still have the problem of overlapping letters. We need to combine the overlapped letters of the text by using the “Weld” command.
- 4) Select the welded text and use the “Export” command to save as a DXF file. Save the files in a location that you can easily recall. Use the export settings of “AutoCAD 2000”, “Millimeters”, “Curves” ...
- 5) The work inside Corel is done. You can shut down Corel or simply minimize the application.
- 6) Open the window of LaserCut 5.3. Start a new project. Import the DXF file that you had just created. As we zoom in to see the DXF outline closer, we see that the letter outlines are combined.



- 7) Start a simulation of the project to confirm the text to be engraved correctly.