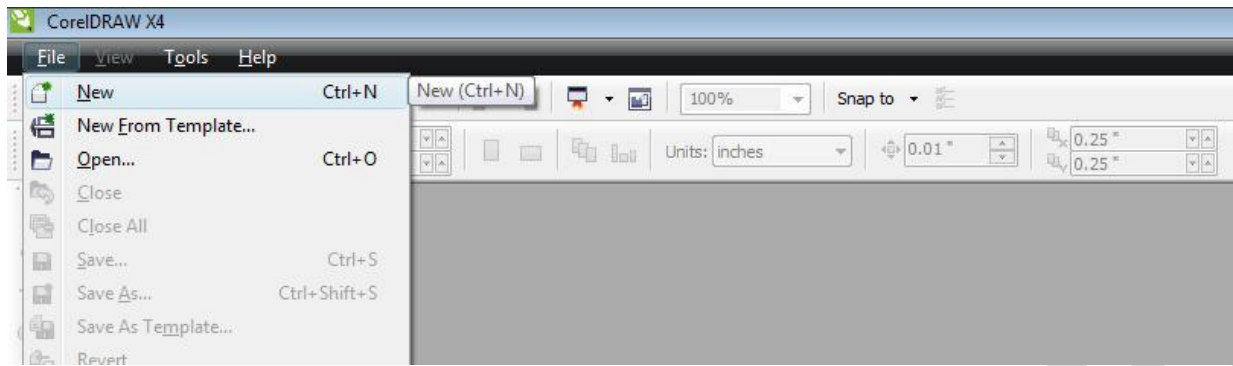
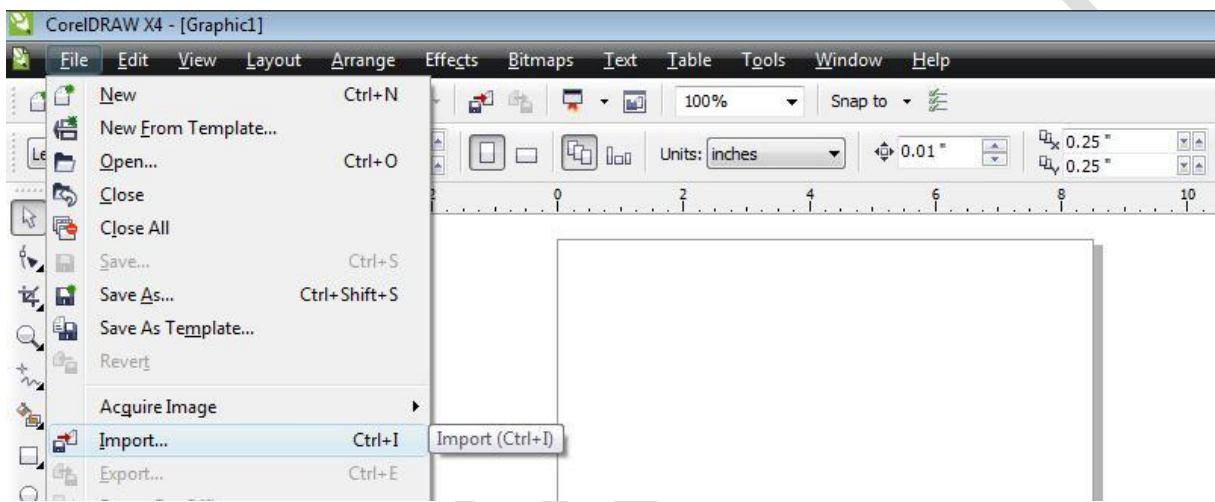


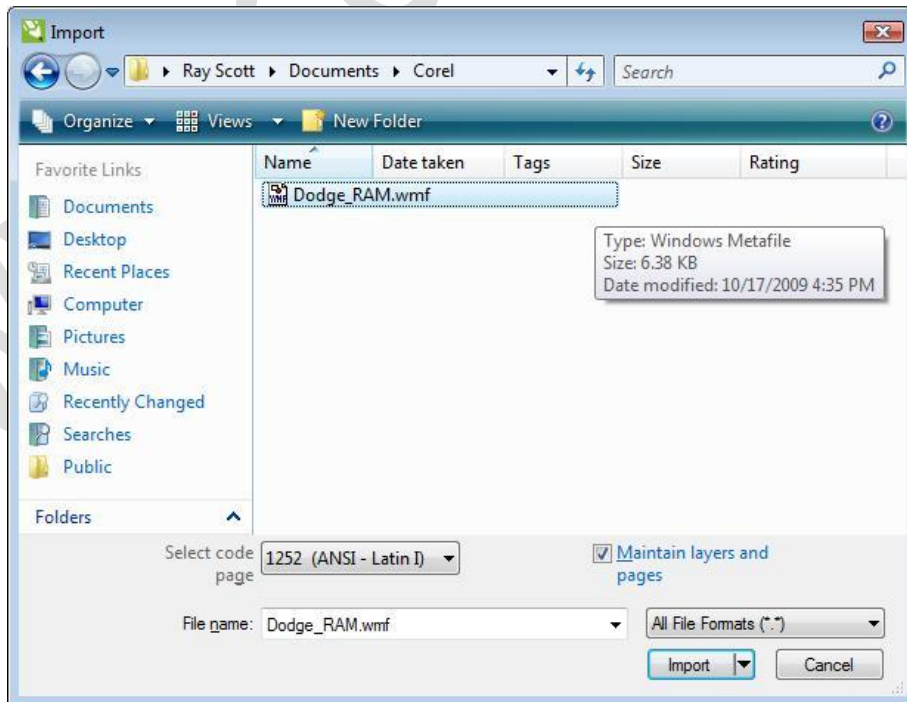
# Using Corel to Convert Vector file type for importing into LaserCut 5.3 .



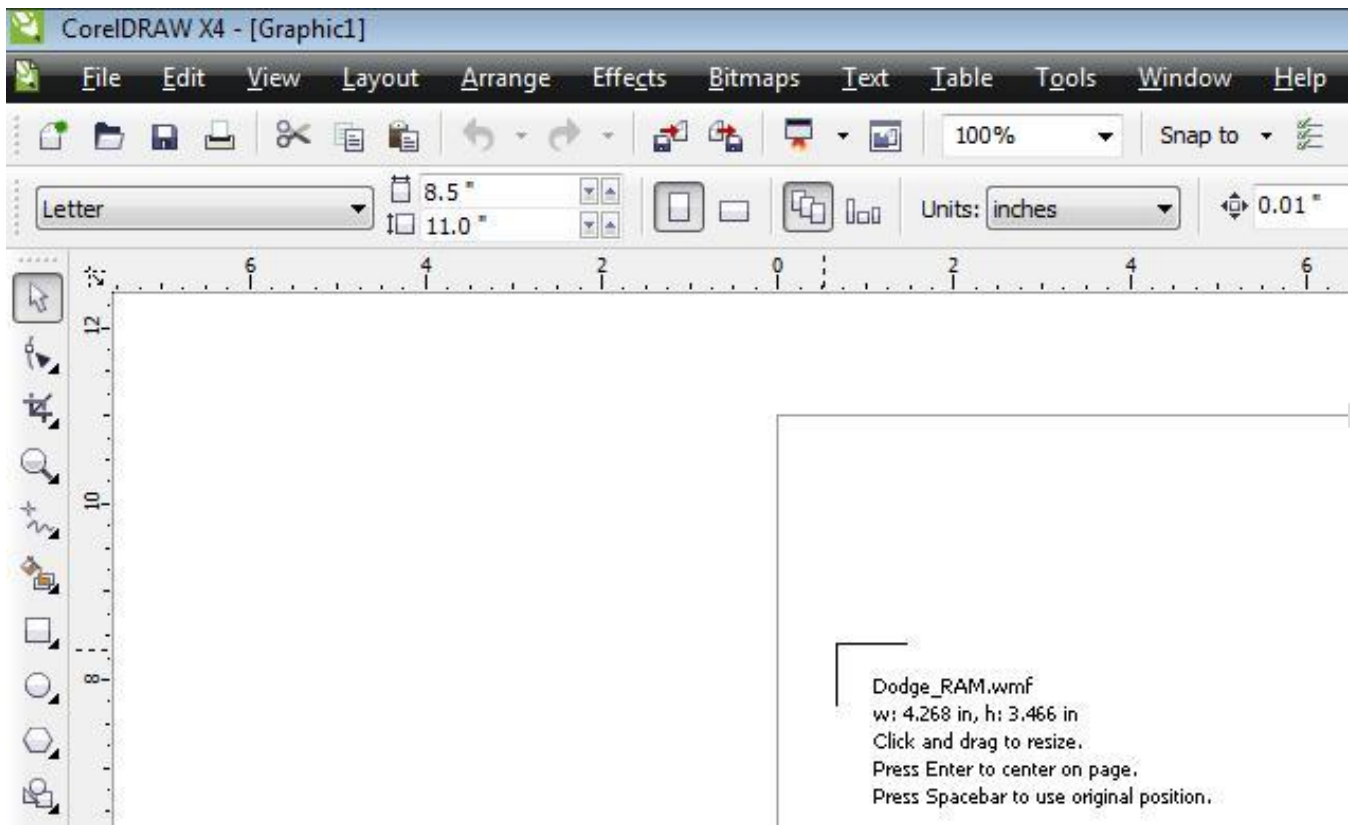
1) Open a new project in Corel.



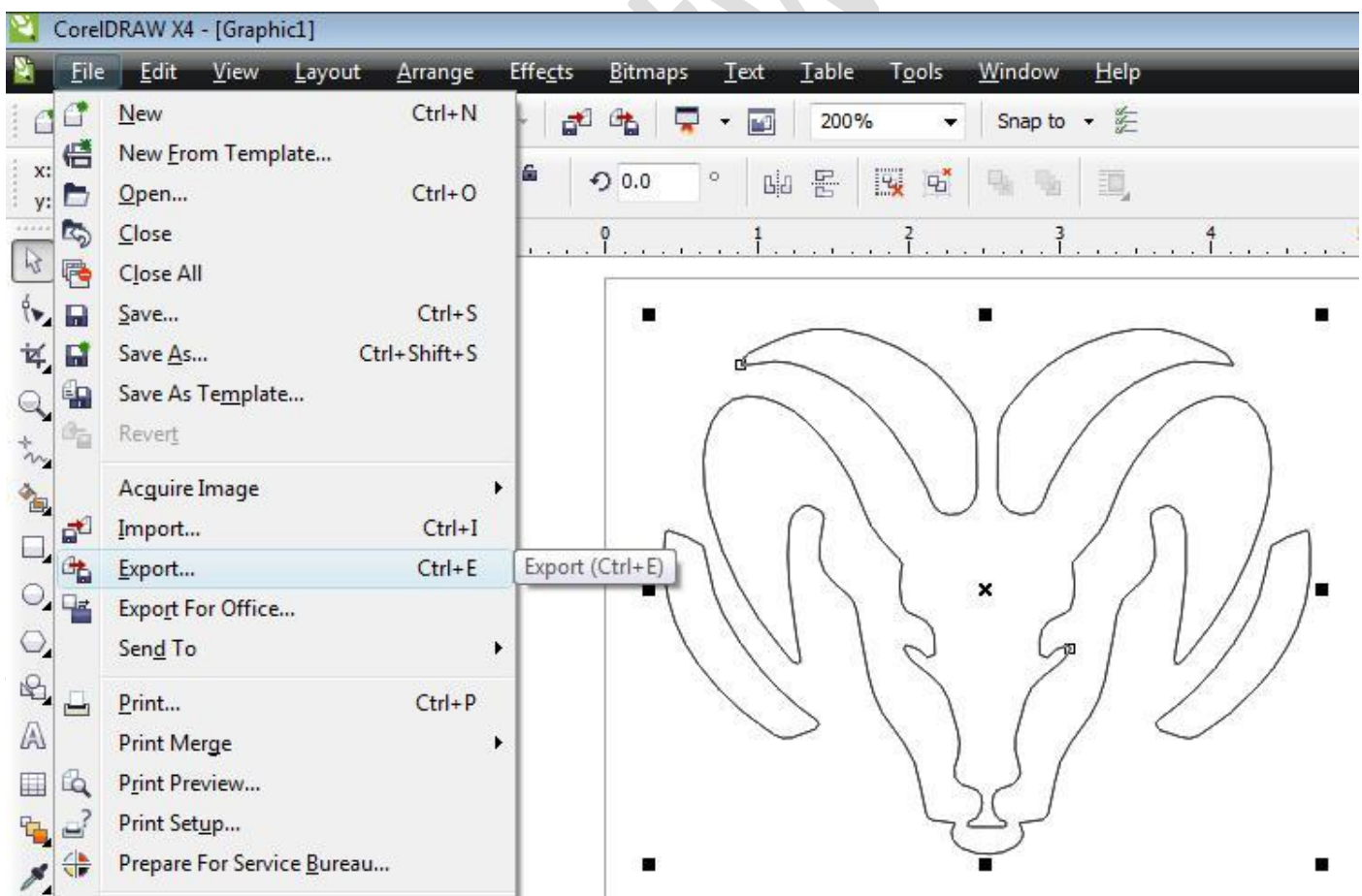
2) Select menu to import a file.



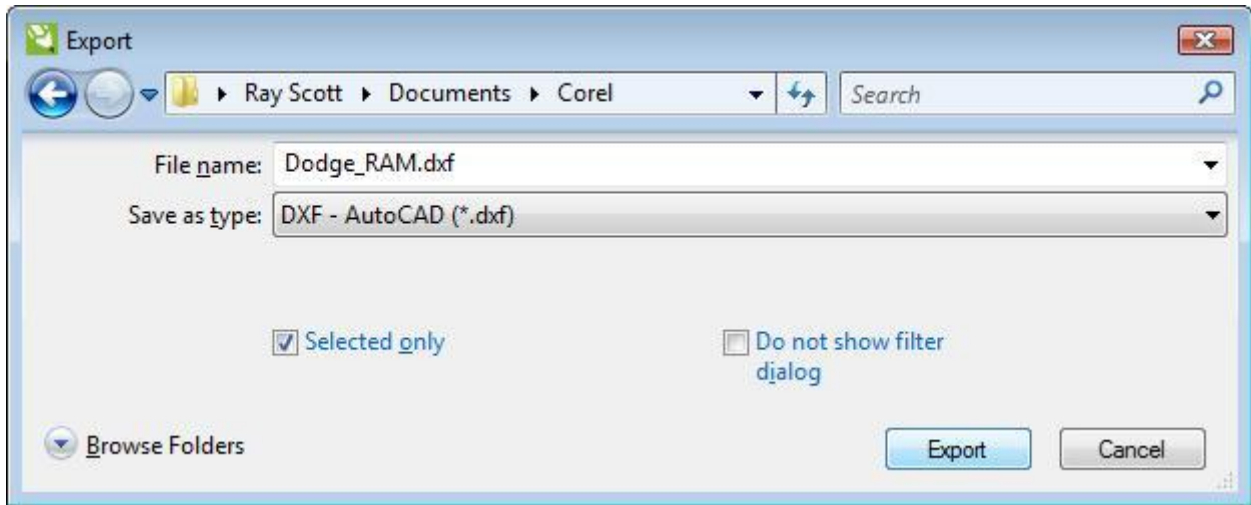
3) Import the vector graphic file.



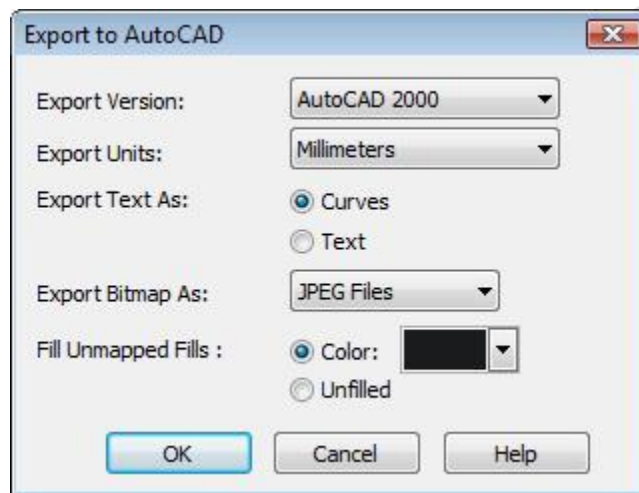
4) Place the graphic on the Corel workspace.



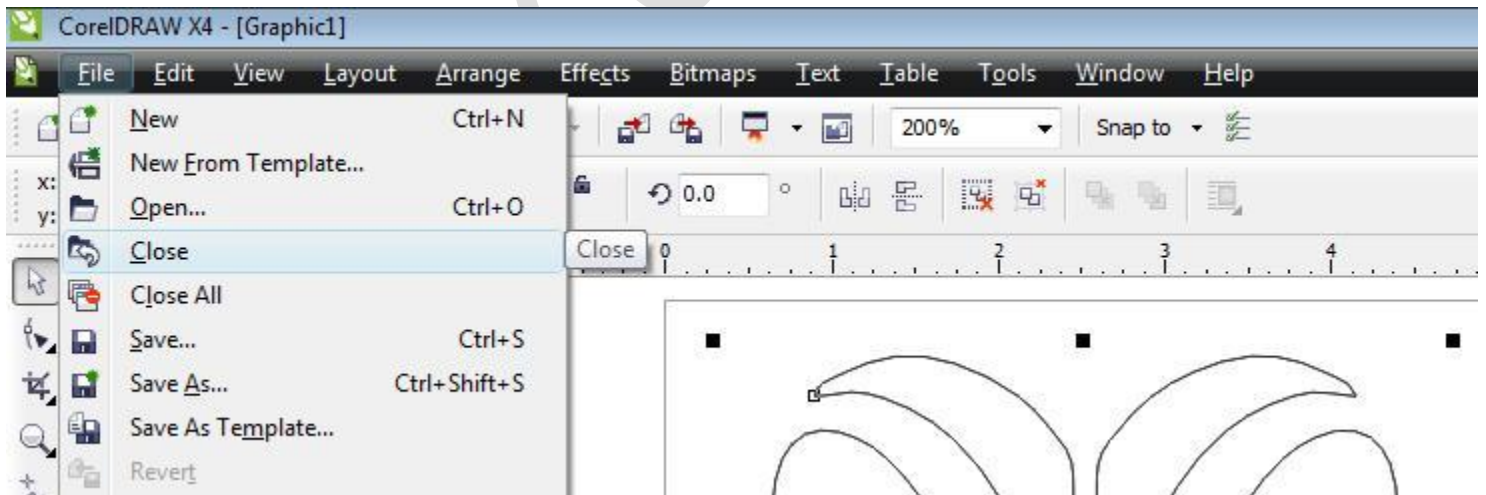
5) Select menu to export to a file.



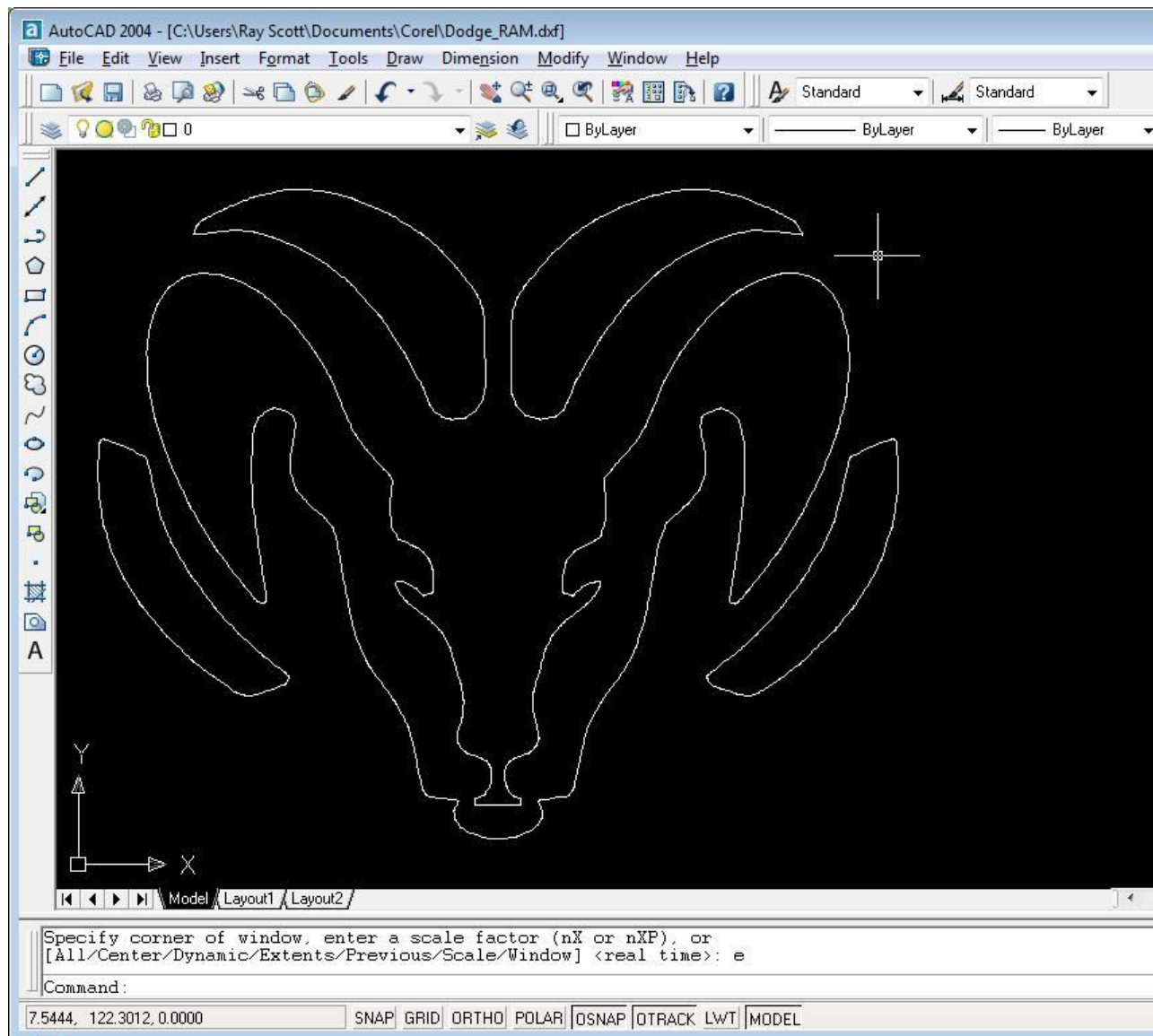
6) Select the file DXF type, location, and name.



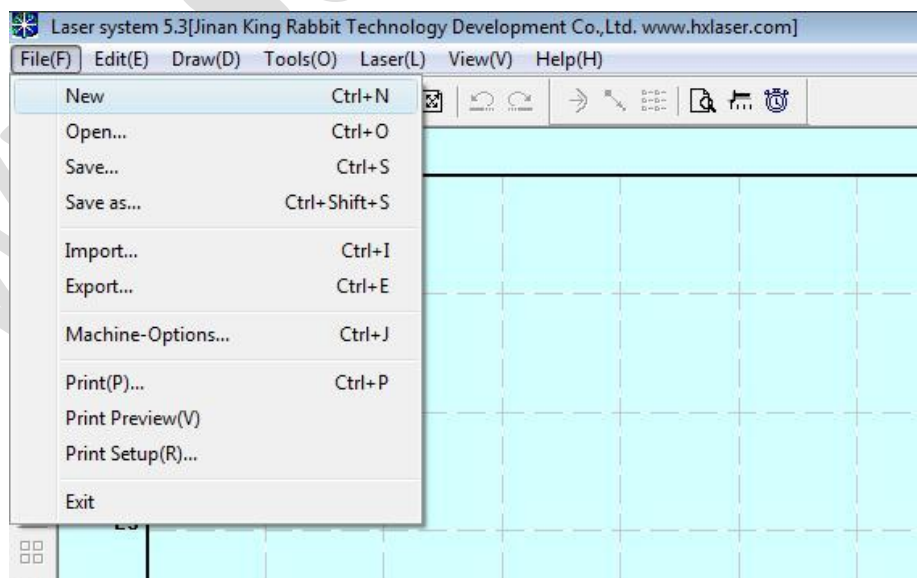
7) Select DXF settings as version: AutoCAD 2000, Text as Curves, Bitmap as JPEG, Unmapped fills with Black.



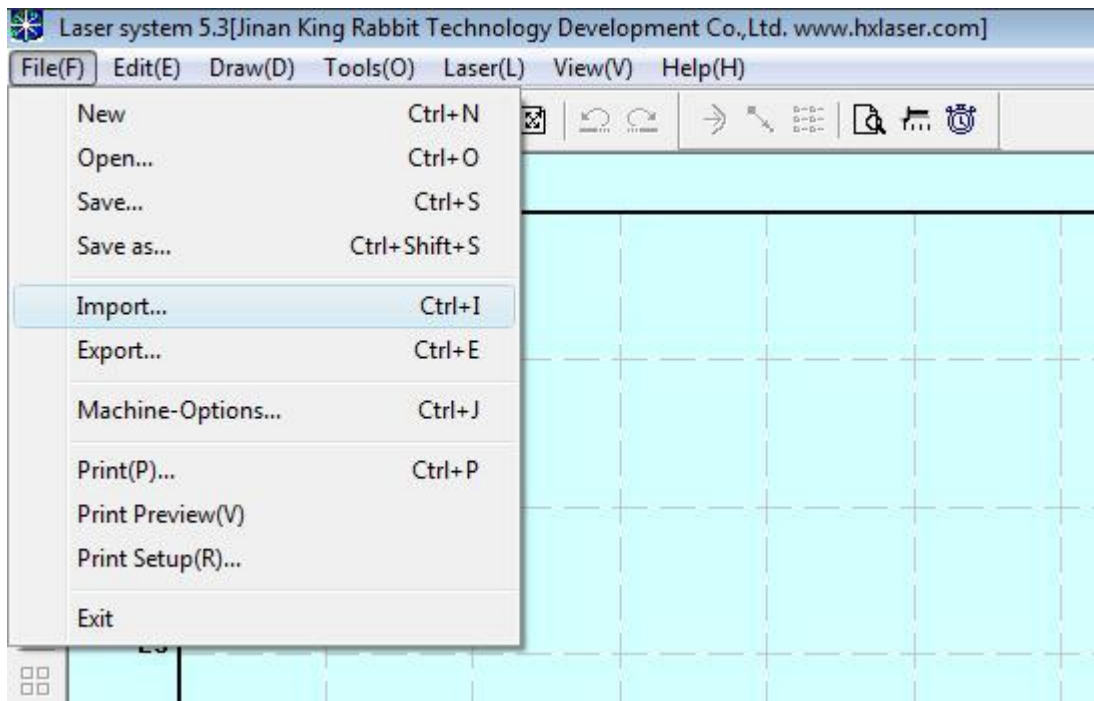
8) Close or minimize the Corel Project.



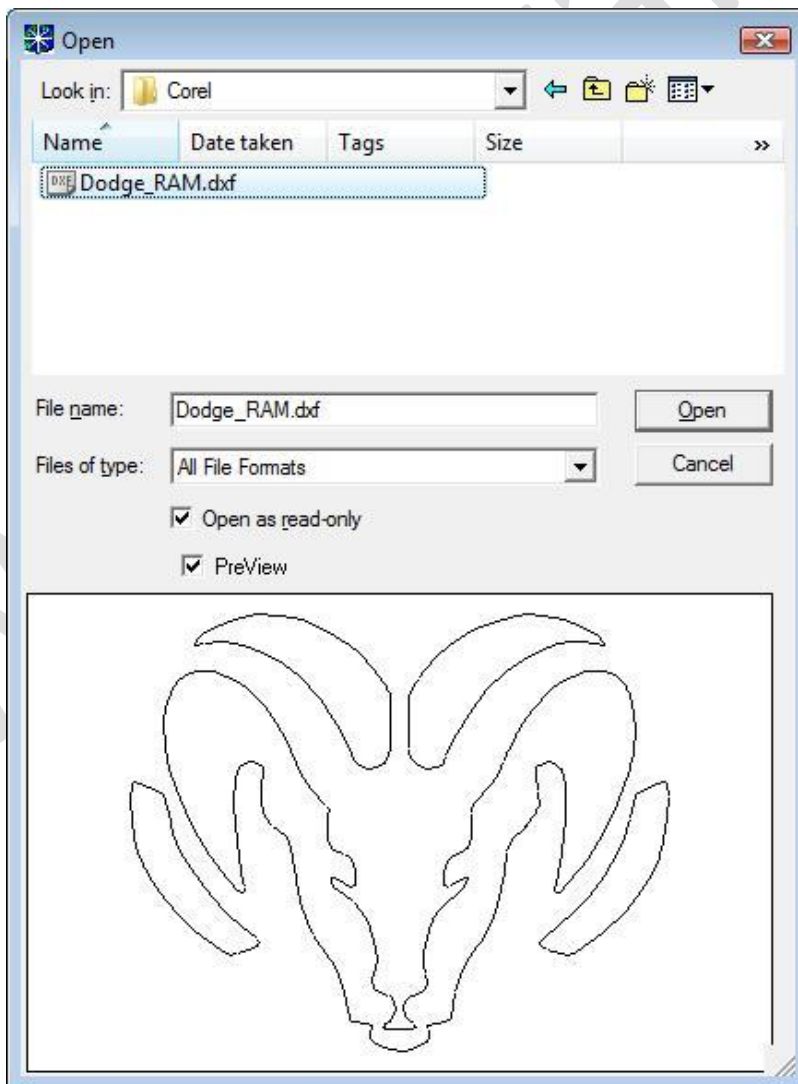
9) I used AutoCAD to verify the file conversion worked correctly.



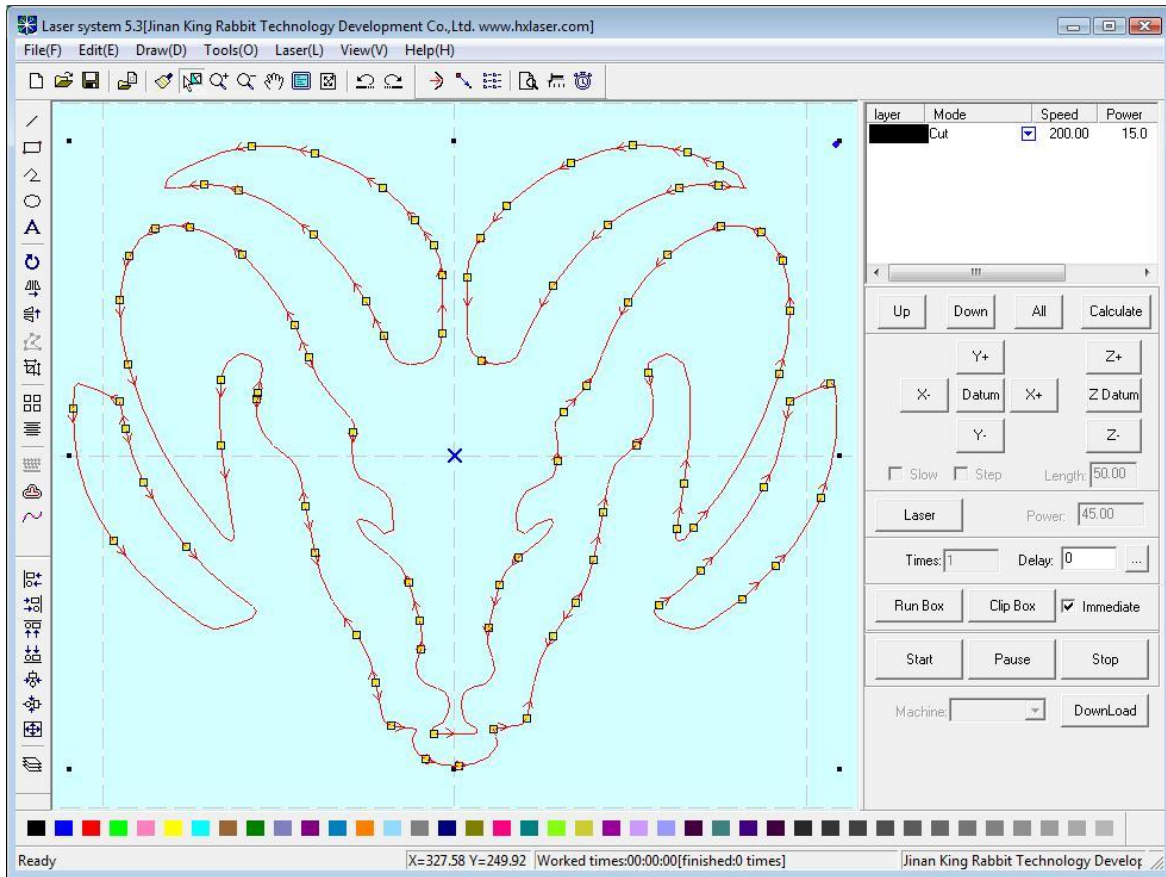
10) Open LaserCut 5.3 with a new project or into your existing project.



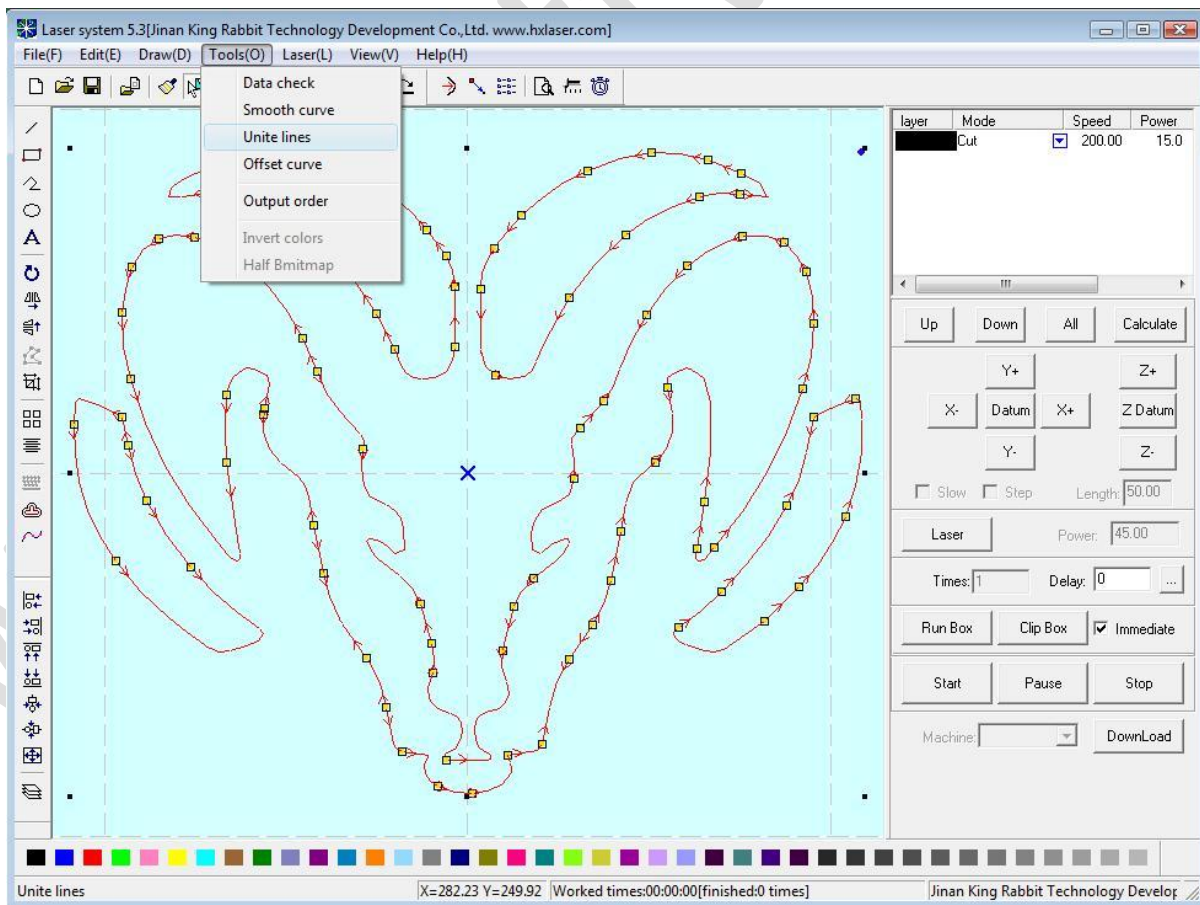
11) Select menu to import a file.



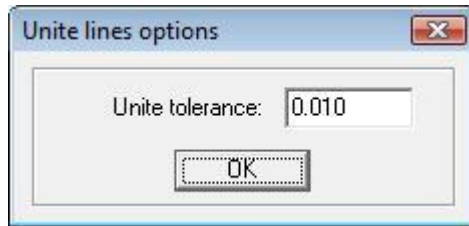
12) Select the AutoCAD DXF 2000 file to import. LaserCut works BEST with this version of AutoCAD DXF file.



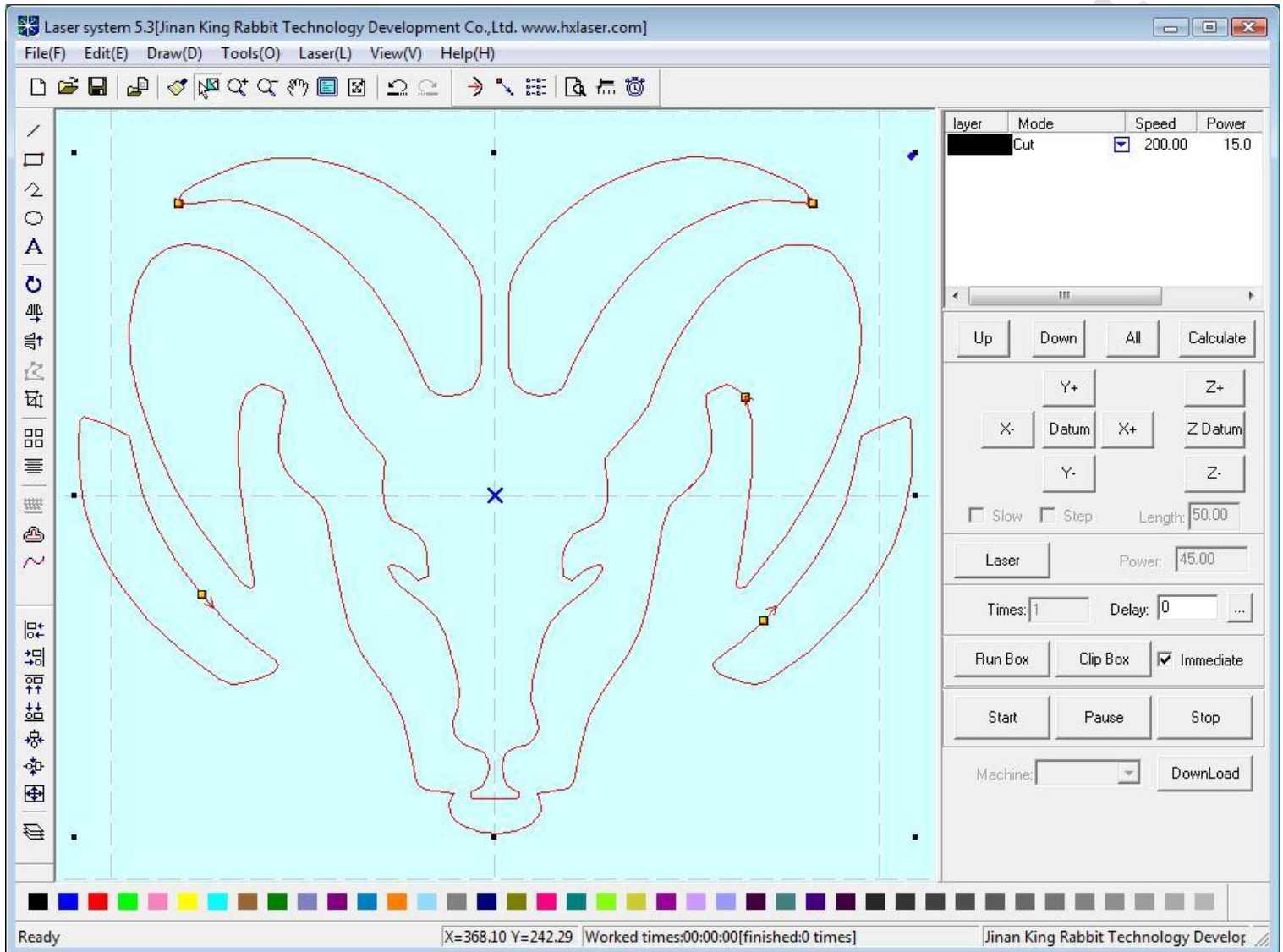
13) The file is imported. Notice the graphic has many line segments.



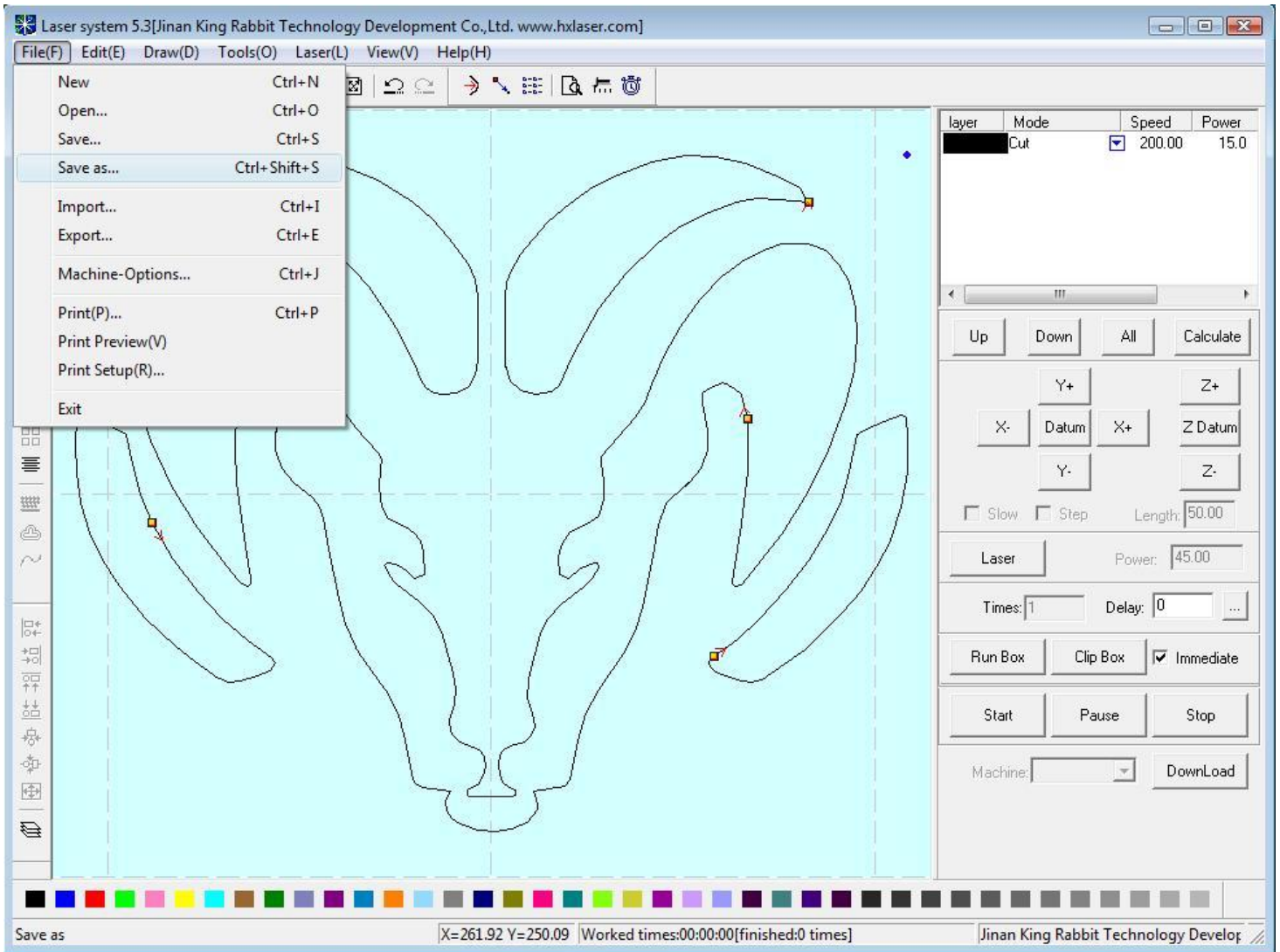
14) Select menu to unit lines.



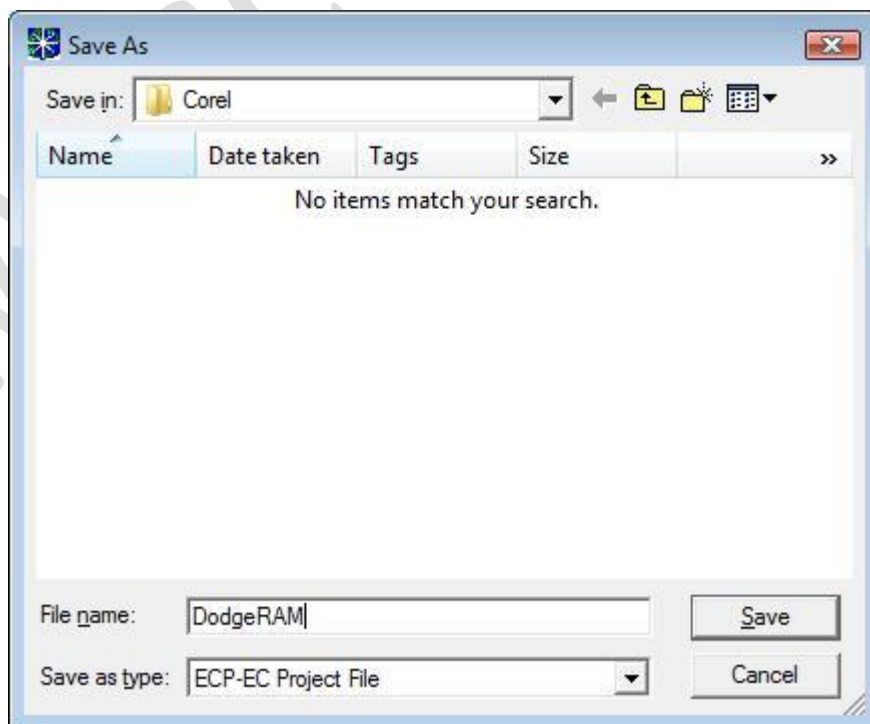
15) Use the default settings for tolerance to identify line endpoints as connecting.



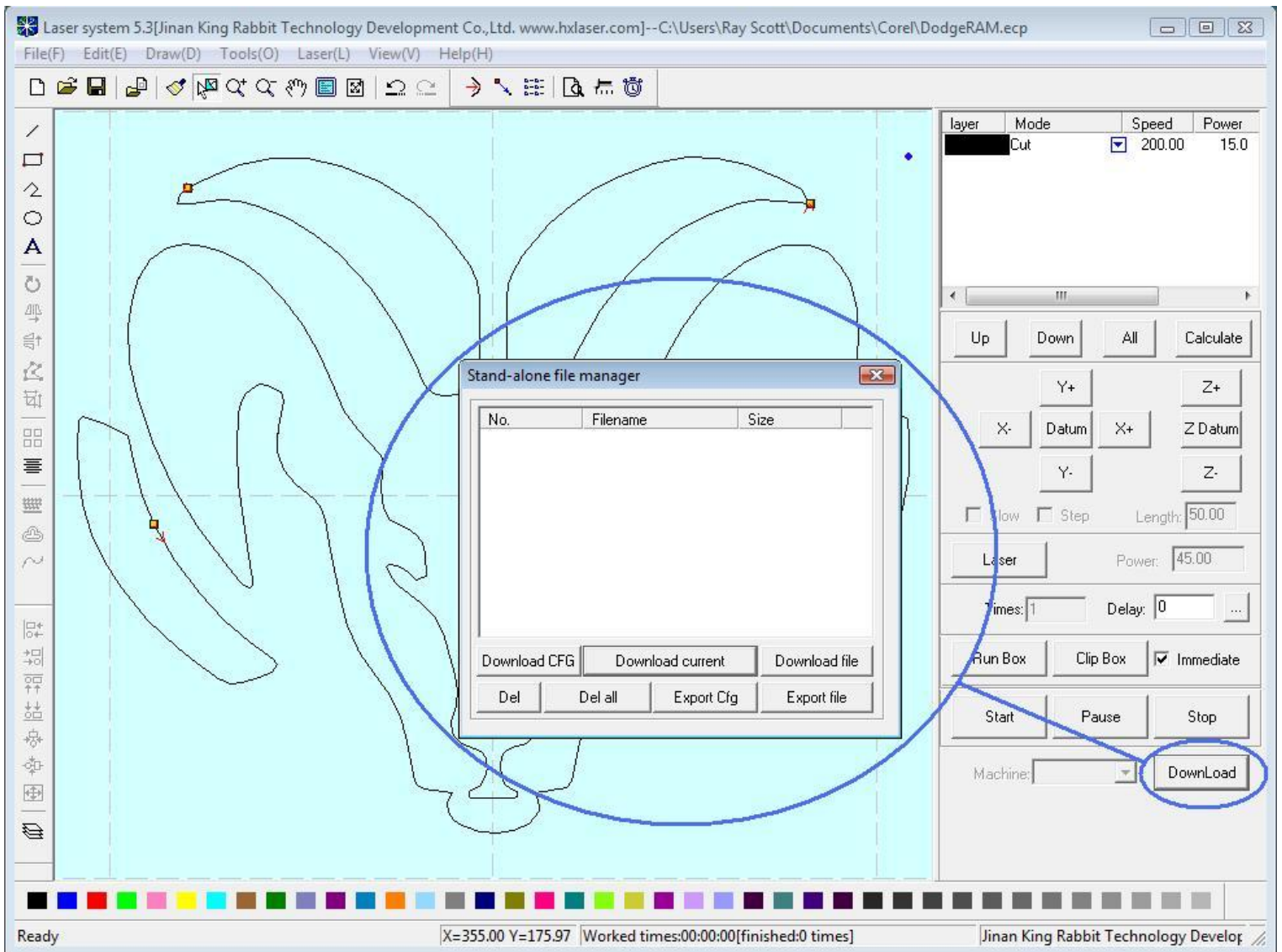
16) Notice the connecting lines are now united.



17) Select menu to save the file.



18) Declare the file name and location to save the file.



19) Use the Download Manager to send the project to the laser machine.

By: Raymond L. Scott  
[www.scottware.net](http://www.scottware.net)  
3503 Carol Ann Lane  
Middletown, OH 45044