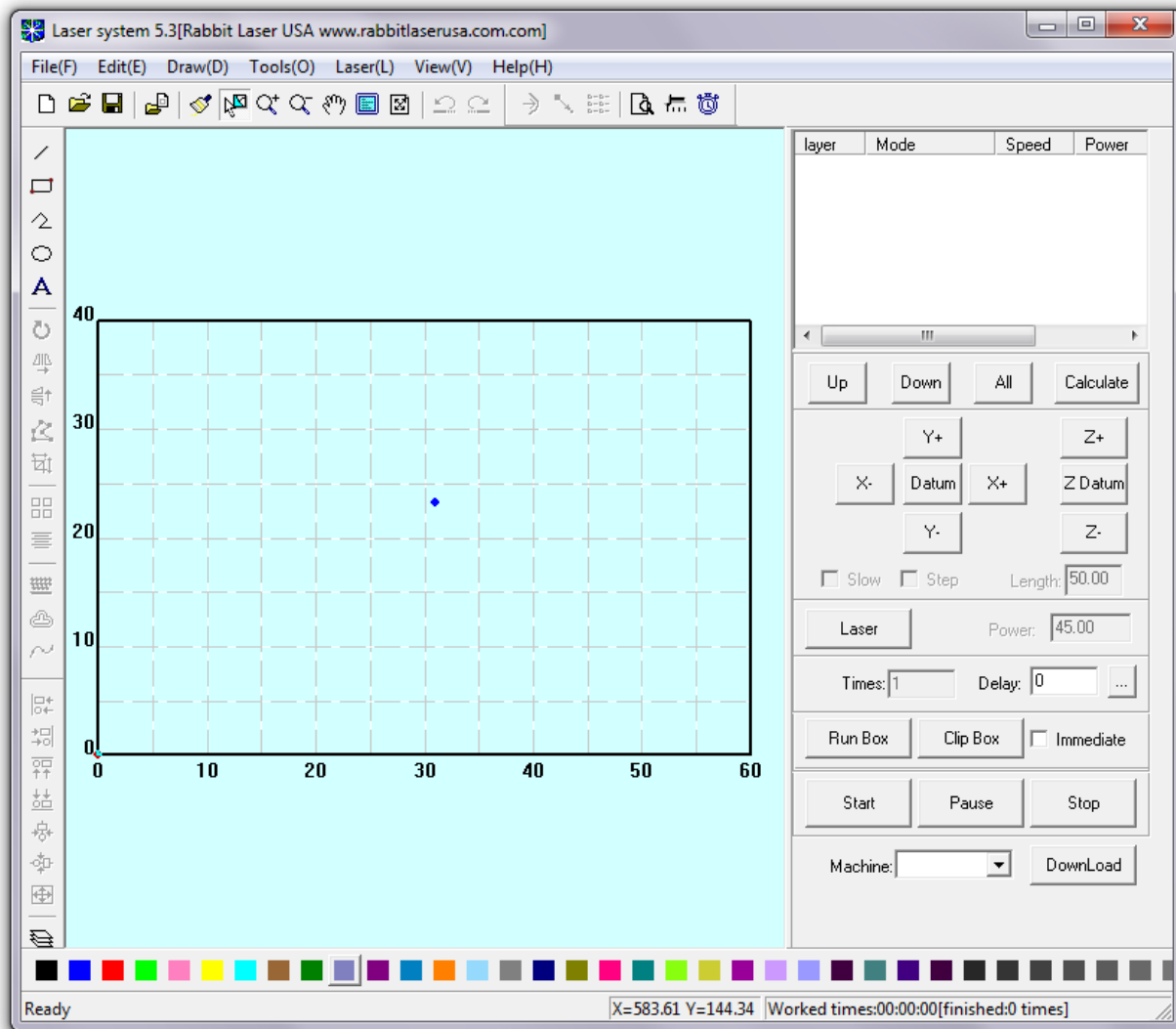


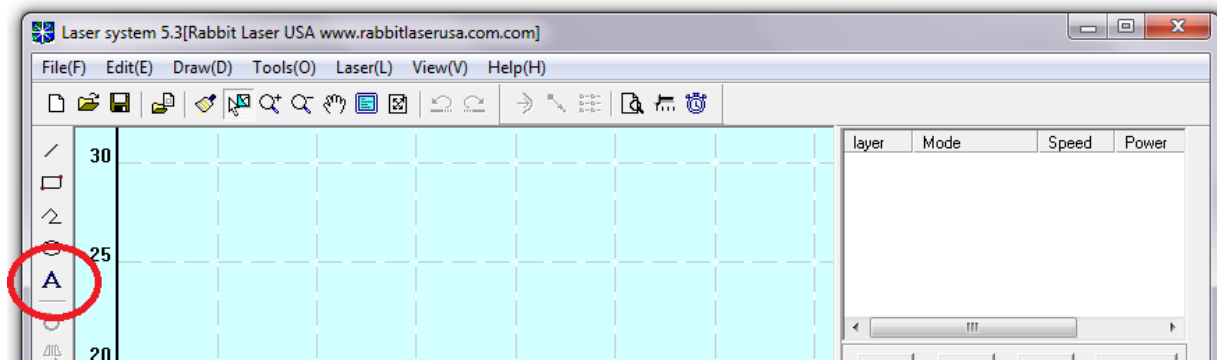


Working with LaserCut 5.3 to engrave a name to material such as wood. Complete the following steps:

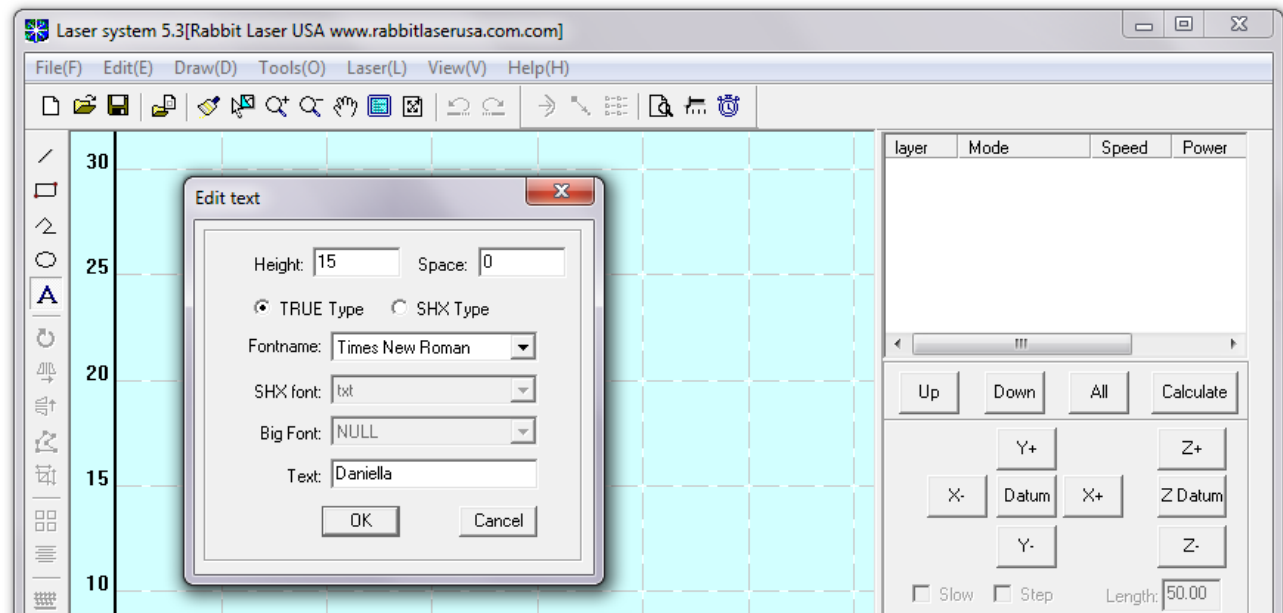
- 1.) Open The LaserCut 5.3 windows application or use the file menu to start a new project.



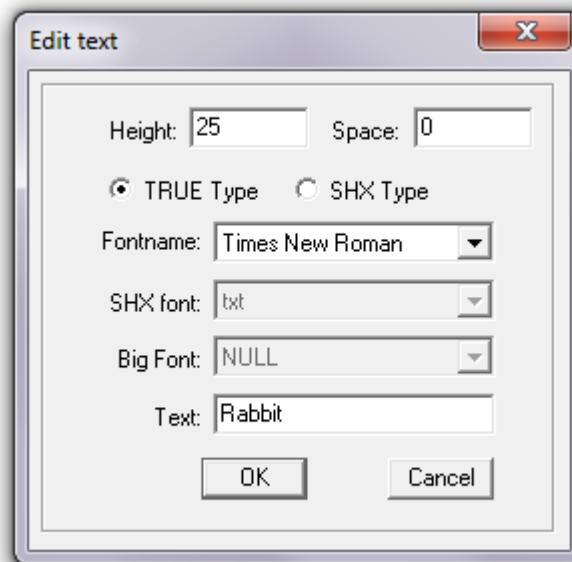
- 2.) Left click the mouse over this image to select the "Text" tool.



- 3.) To draw the text on the work space, click (and hold the mouse button down) on the work area, drag the mouse to the opposite corner of the circle, then release the mouse button. The LaserCut 5.3 software will immediately show the “Edit text” dialog window.



- 4.) Use the “Edit text” dialog window to select the appropriate text height (measured as font points... not millimeters). The “Space” value will give more/less space between characters. If selecting a true type font, then the LaserCut 5.3 software can find any font that is installed in the Windows operating system. Type the desired characters in the “Text” area. Special fonts will produce images that correspond to the font character mapping.



- 5.) Select “OK” and the text is placed onto the drawing area. You may need to rotate or move the new text to place it on a specific part of the drawing area. You may want to “mirror” the new text if you need to engrave to the back of a mirror, glass, or clear acrylic.



Move



Mirror Horizontal

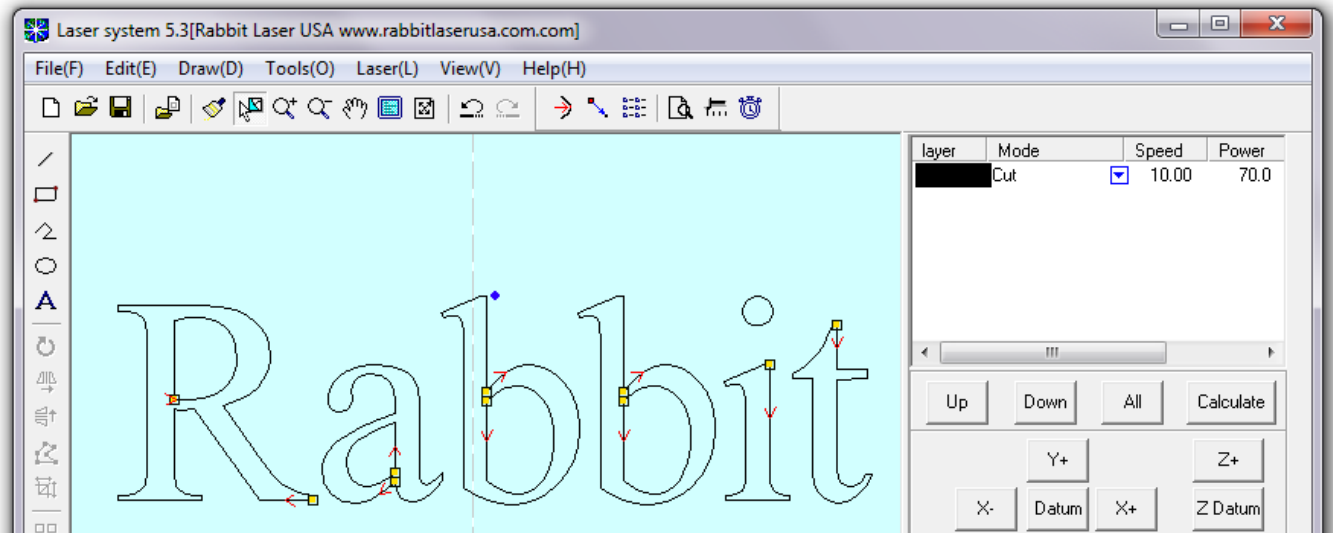
Mirror Vertical



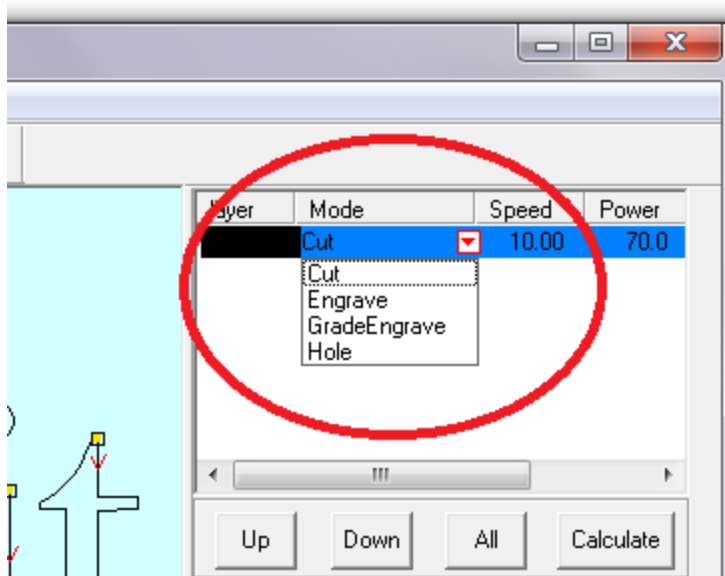
Rotate

- 6.) Now that the new text is on the drawing area where we need it, we need to understand more about engraving the text. The text has been converted into a drawing object and no longer has the letter property. The word “Rabbit”

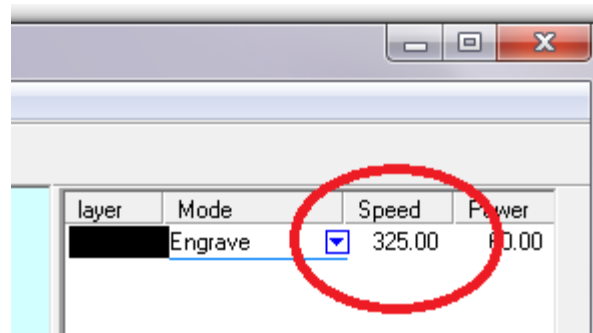
is just a bunch of lines and circle segments. Lasercut 5.3 cannot edit the word “Rabbit”. You would need to delete the drawing objects and go back to step 3.



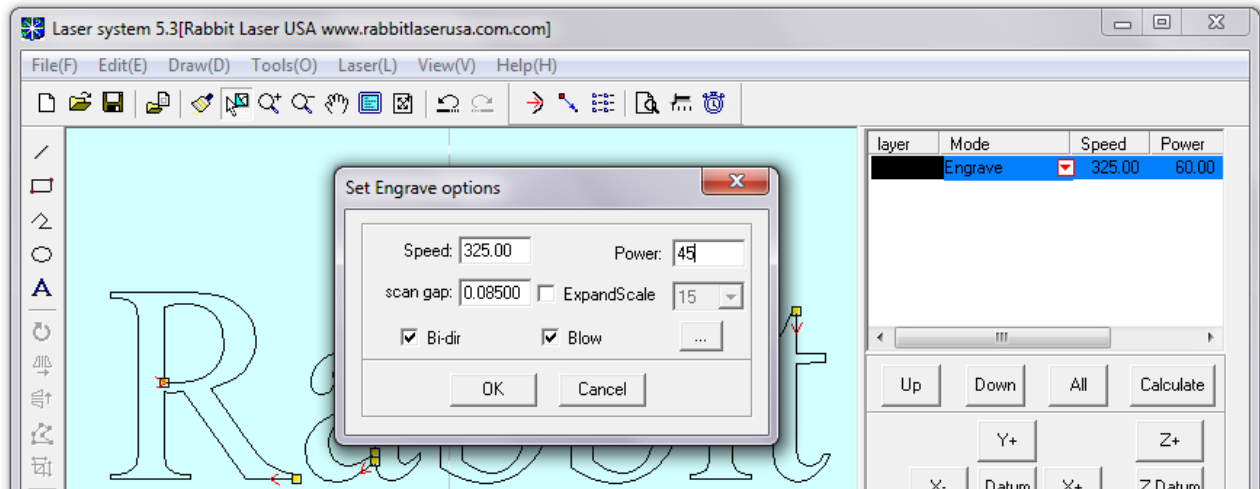
- 7.) Notice that the “Rabbit” is made of black lines and circle segments. The black color is currently set to a mode of “Cut”. We need to change the mode to “Engrave”. Click the red triangle button next to the black layer. This will cause a small menu to drop. Select the “Engrave” function.



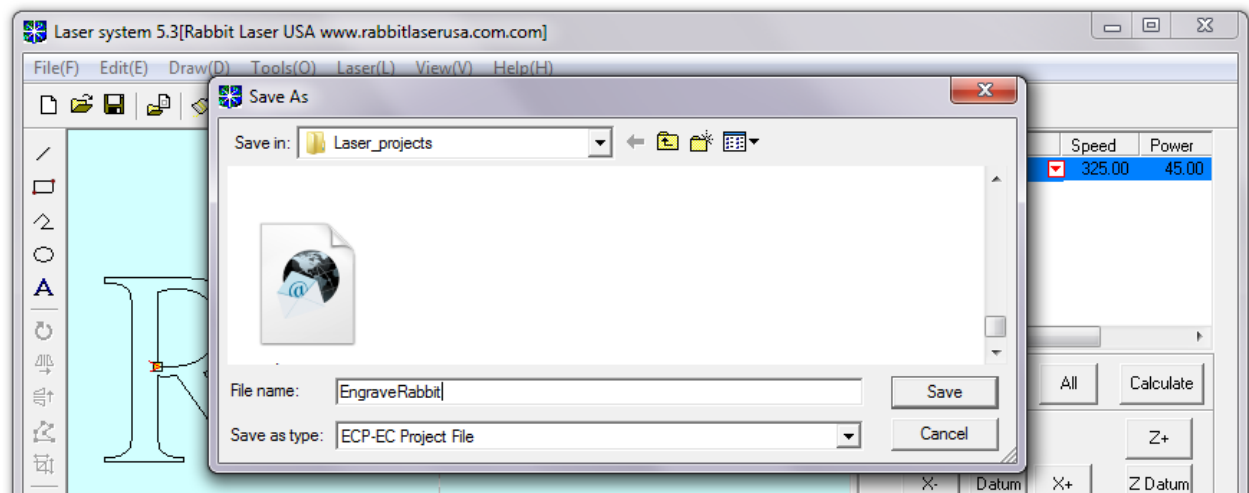
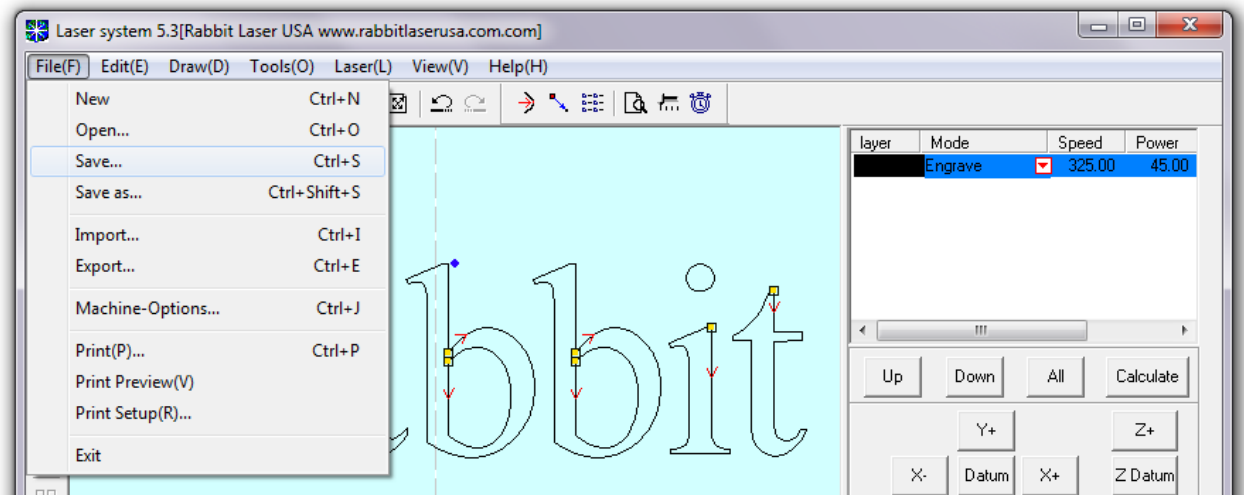
- 8.) The next step is to change the value of the “Speed” and “Power” settings for the laser to engrave the “Rabbit” object. Double-Click over the speed value for the proper color. In this design, we only have the one color layer of black.



- 9.) The “Set engrave options” dialog window will appear. Change the “Speed” to value of “325”. Set the “Power” to value of “45”. Set the “Scan gap” to value of 0.085. The scan gap corresponds to a Dots-Per-Inch spacing as the laser machine scans vertically. Equation .. $25.4 / \text{DPI} = \text{Scan gap}$

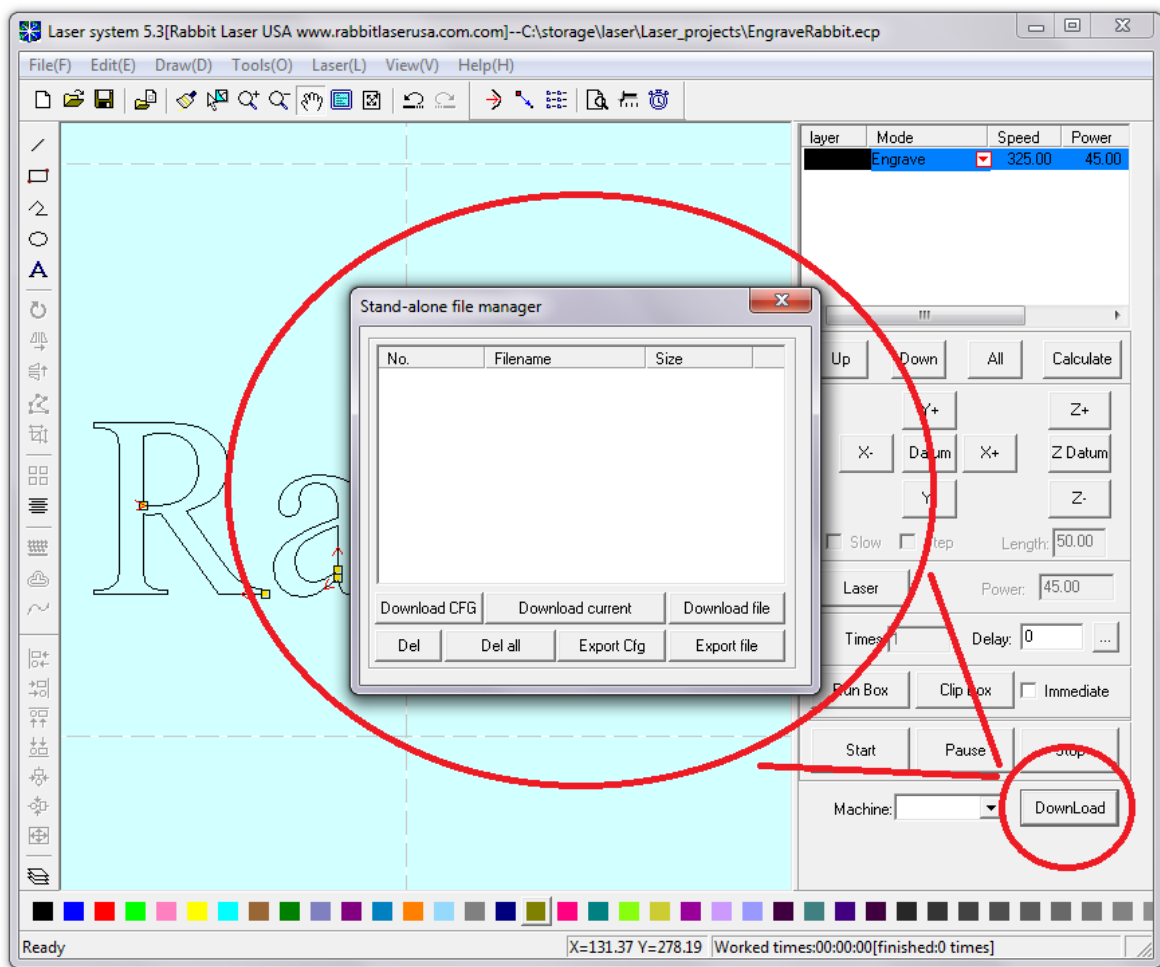
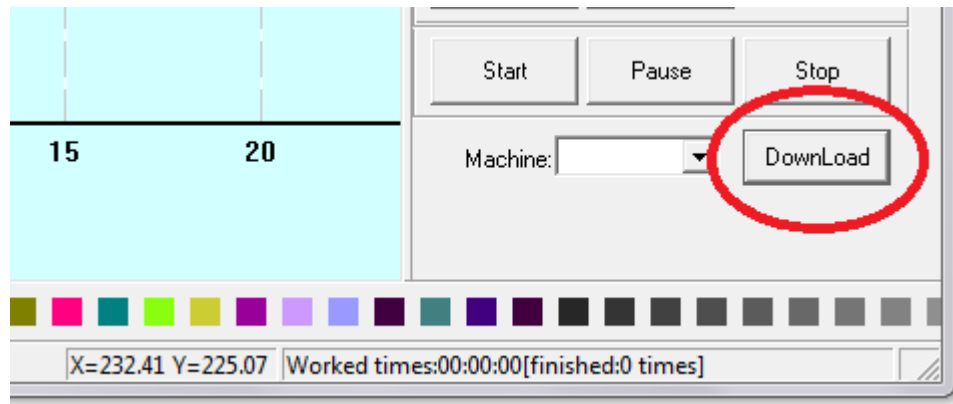


- 10.) Save the project to the computer. Make sure to save a filename that uses numbers and letters only. Do NOT use spaces, underscore, dash or any special characters in the filename.

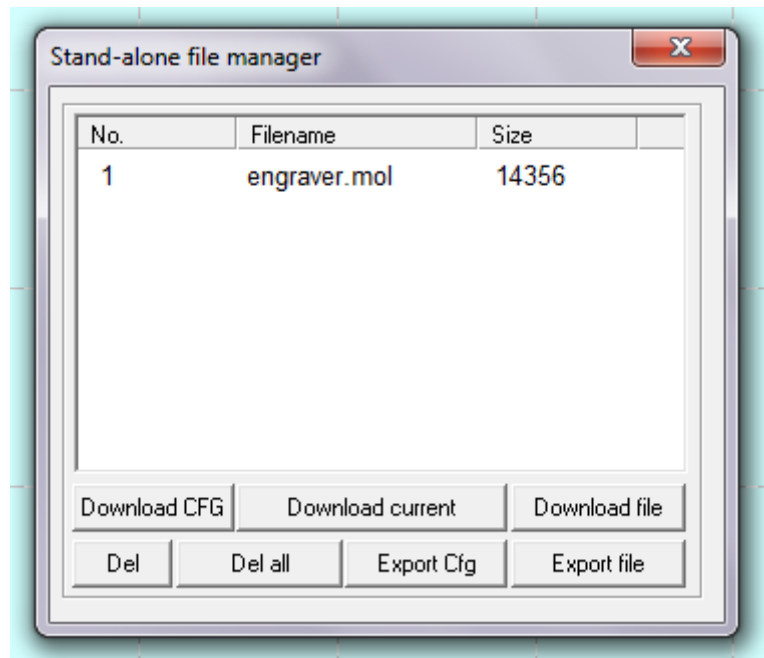


This file has been saved with name of “EngraveRabbit.ecp”. The *.ecp file extension is for this program and does not denote any other software file format.

11.)The circle is drawn. The laser settings are made. The design project has been saved to file. The next step is “Download” the design into the laser machine. Make sure that the computer is connected to the laser machine by USB cable and that the laser machine is turned on. The computer should already have the drivers loaded.



12.)The “Download” command will start a new connection with the laser machine through the “Stand-alone file manager”. It is a good practice to delete all files in the laser machine and to download only the current design project. Click on the “Del all” button to erase the laser machine memory. Click the “Download current” to load the circetest.ecp from the LaserCut 5.3 software into the laser machine. The compiled file should be read as xx.mol file extension. The motion controller inside the laser machine can only use the first eight characters of the filename. Do not be concerned if the entire filename is not shown.



13.)The laser machine should be ready to engrave... Please remember to check focus and proper material space.

Ray@rabbitlaserusa.com

www.rabbitlaserusa.com

Middletown, OH 45044

1-513-217-5707