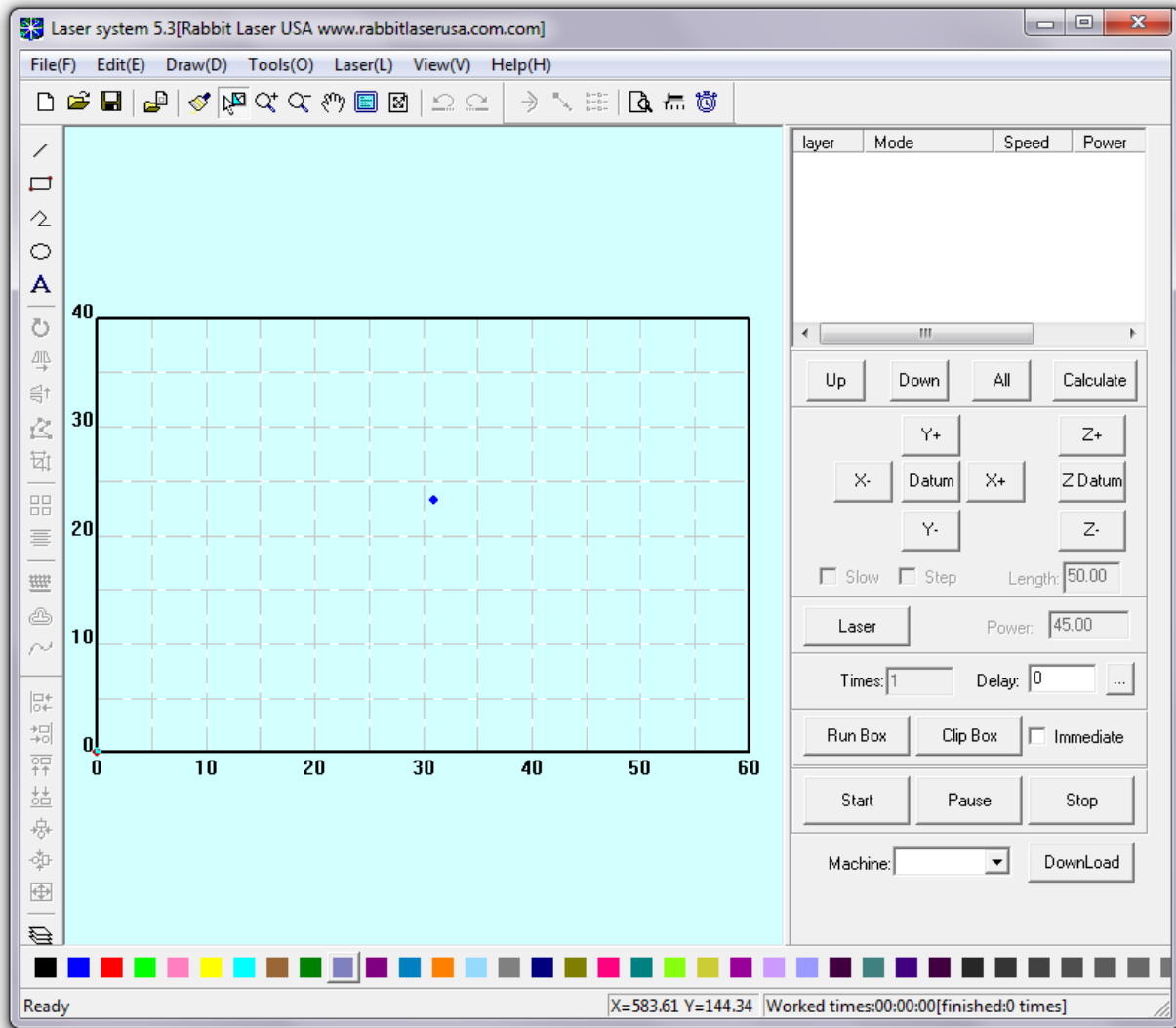


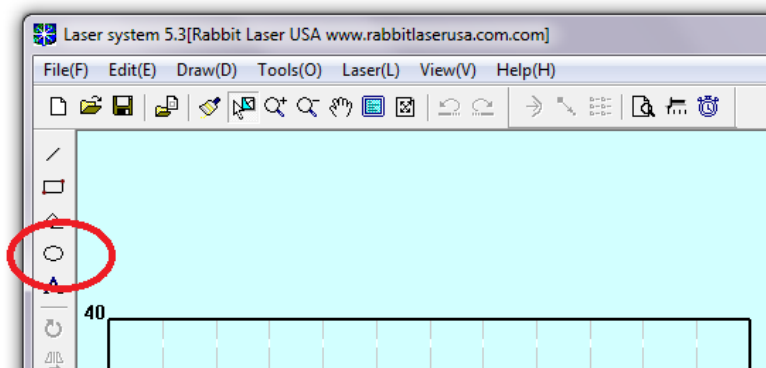


Working with LaserCut 5.3 to cut a simple circle. Complete the following steps:

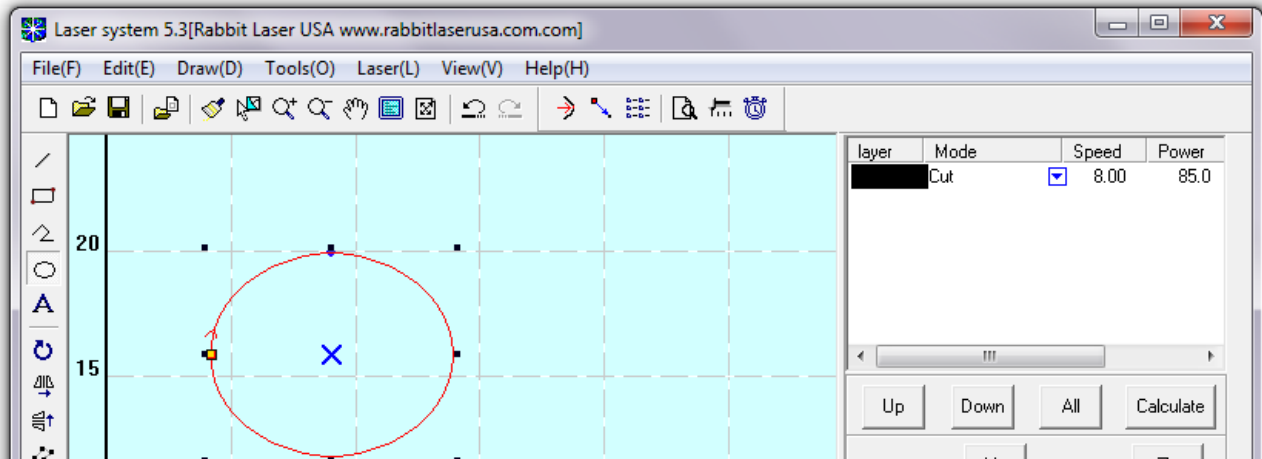
- 1.) Open The LaserCut 5.3 windows application



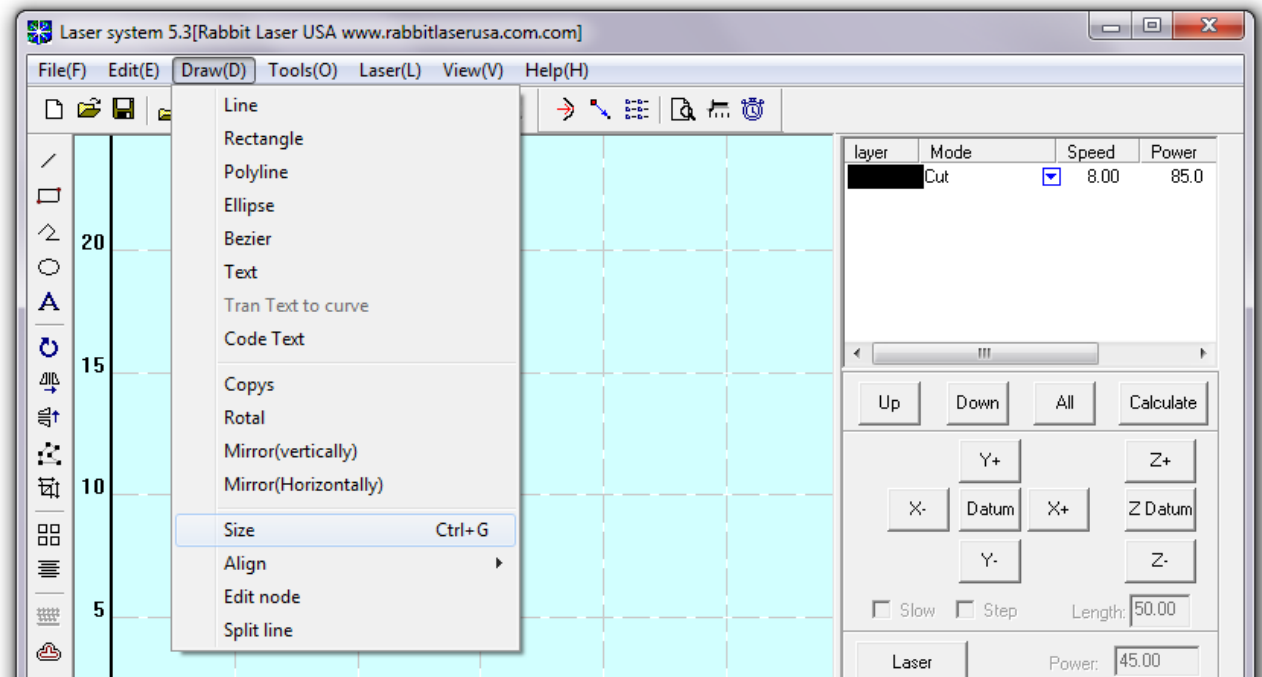
- 2.) Left click the mouse over this image to select the "Ellipse" tool.



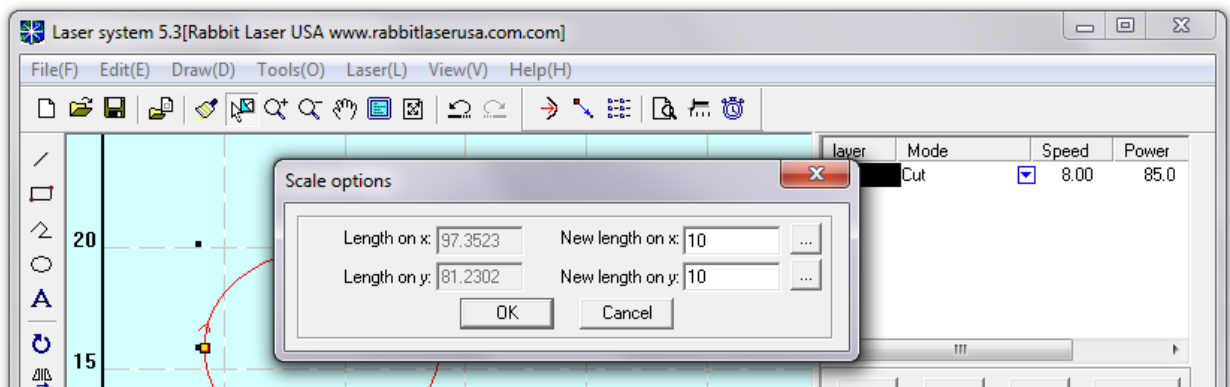
- 3.) To draw a circle on the work space, click on the work area, drag the mouse to the opposite corner of the circle, then click the left mouse button again.



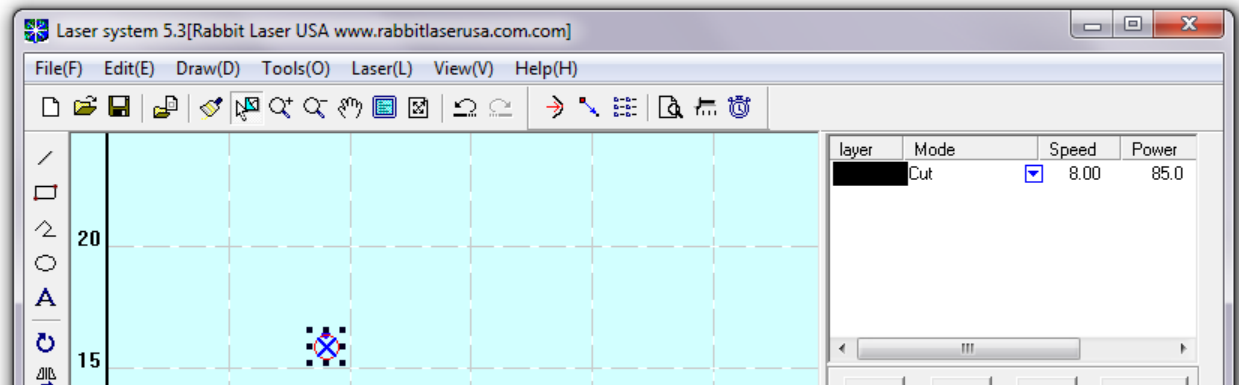
- 4.) The new circle should be color of red and has the stretchable nodes highlighted to show that the circle is selected. Use the menu command to change the size of the ellipse into a circle. Menu ... Draw ... Size. The shortcut for this command can be done by holding the [ctrl] button and pressing the [G] button.



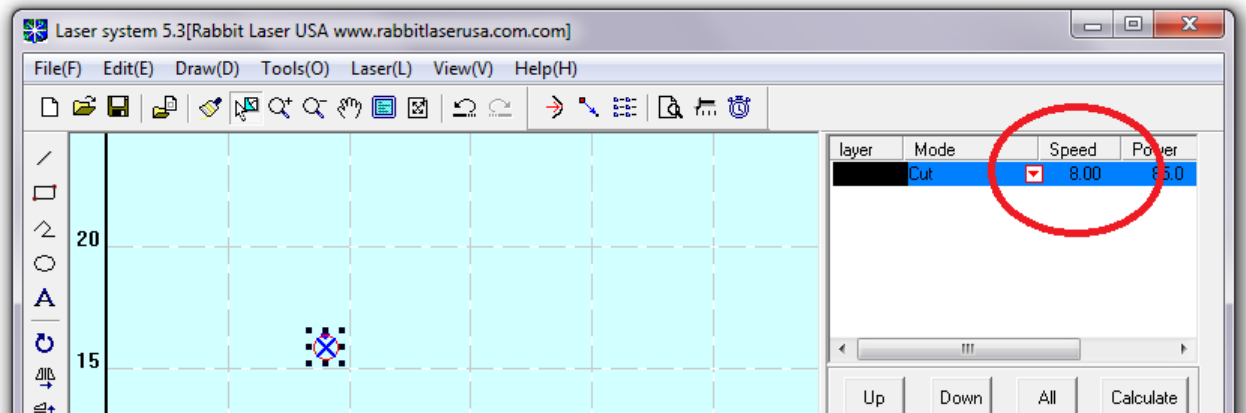
- 5.) Change the new X and Y values to "10" millimeters.



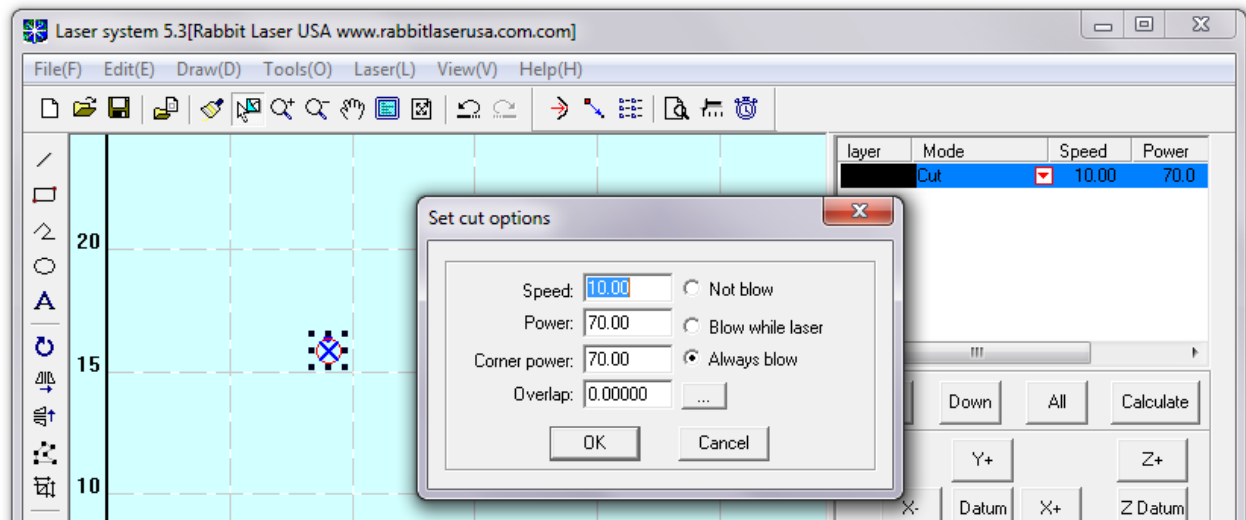
6.) Notice that the ellipse has changed into a circle and now has the exact size that you requested.



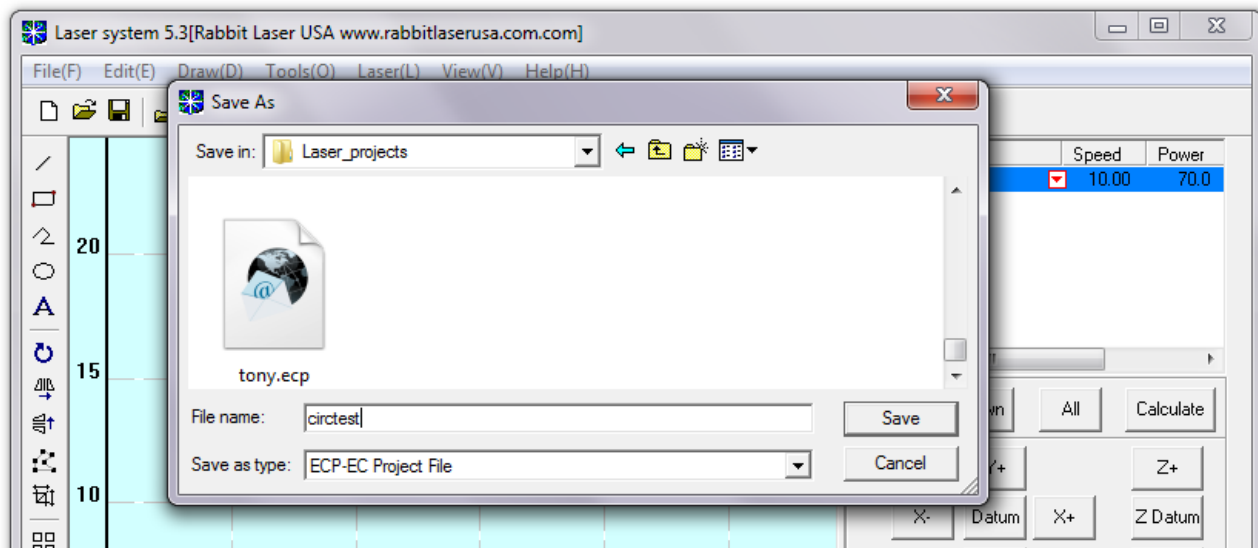
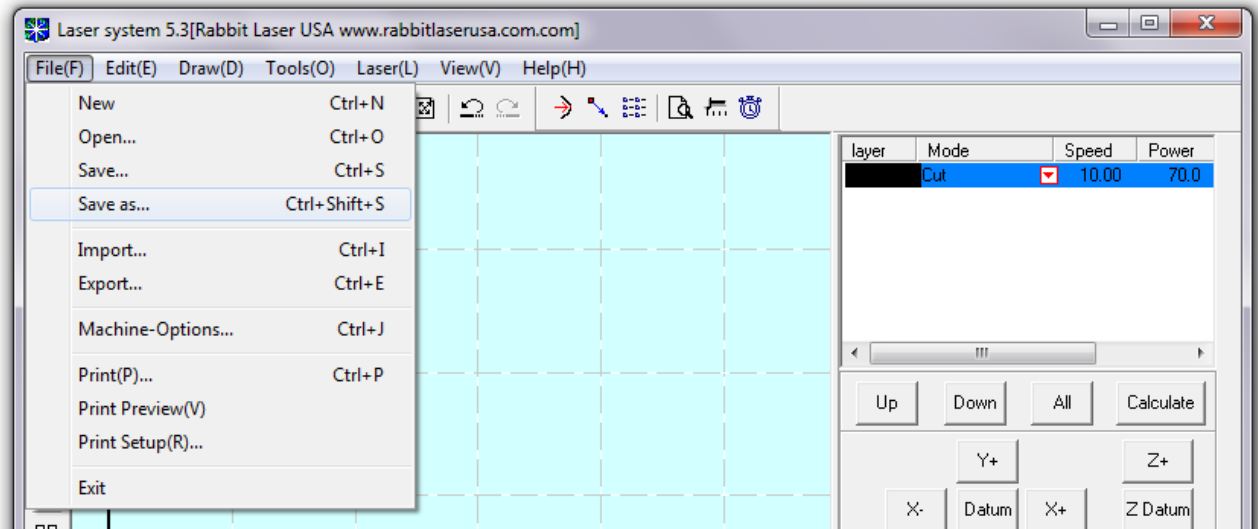
7.) The next step is to change the value of the “Speed” and “Power” settings for the laser to cut the circle. Double-Click over the speed value for the proper color. In this design, we only have one object (the circle) and so we also only have one color layer.



8.) The “Set cut options” dialog window will appear. Change the “Speed” to value of “10”. Set the “Power” and “Corner Power” to values of “70”.

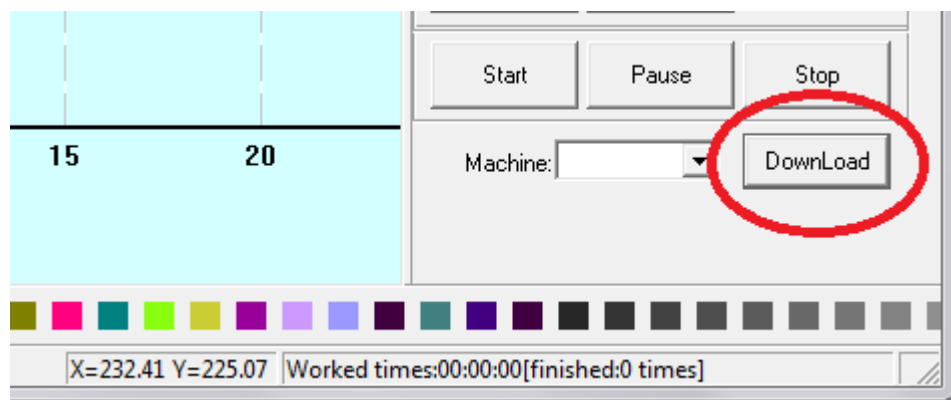


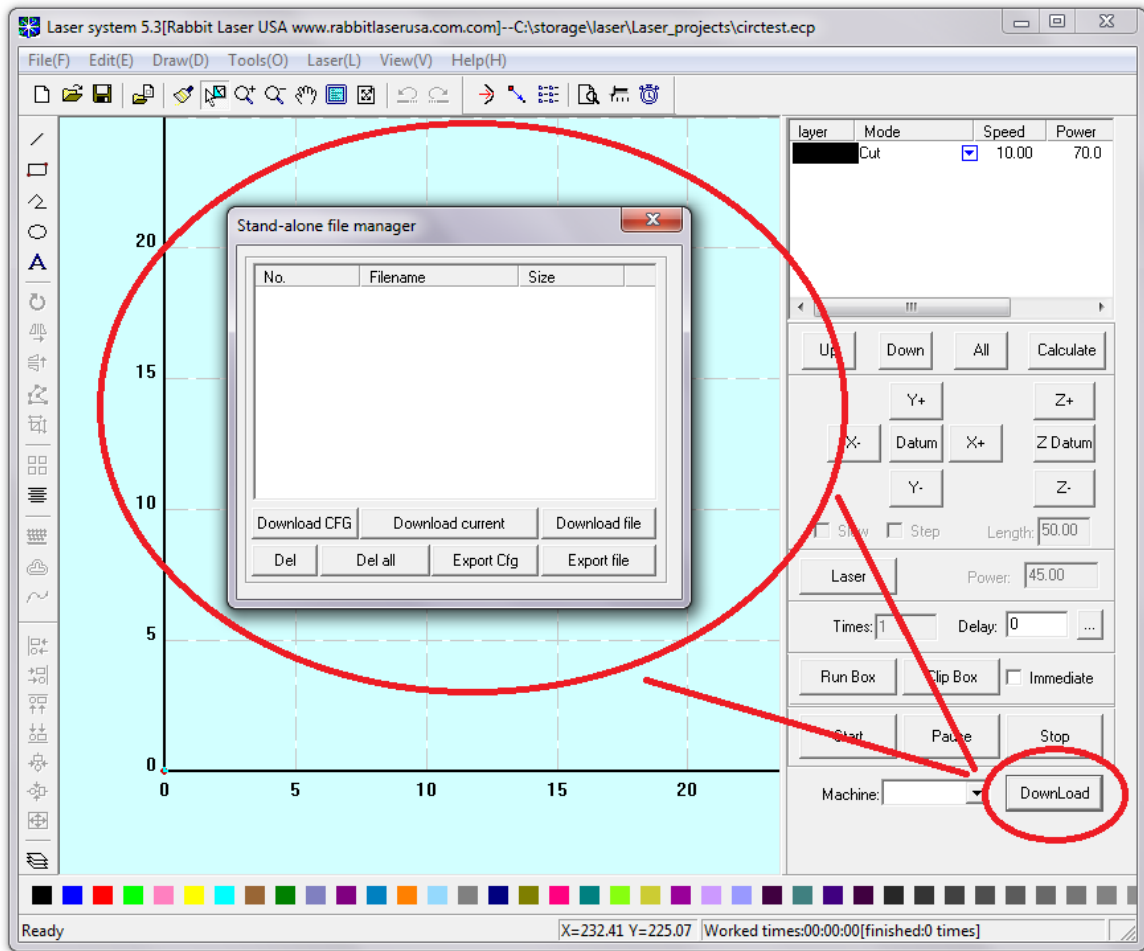
- 9.) Save the project to the computer. Make sure to save a filename that uses numbers and letters only. Do NOT use spaces, underscore, dash or any special characters in the filename.



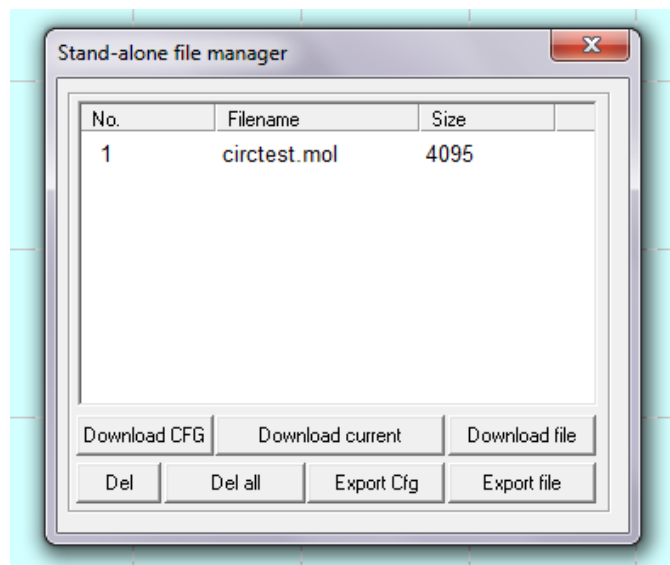
This file has been saved with name of "circtest.ecp". The \*.ecp file extension is for this program and does not denote any other software file format.

- 10.) The circle is drawn. The laser settings are made. The design project has been saved to file. The next step is "Download" the design into the laser machine. Make sure that the computer is connected to the laser machine by USB cable and that the laser machine is turned on. The computer should already have the drivers loaded.





11.)The “Download” command will start a new connection with the laser machine through the “Stand-alone file manager”. It is a good practice to delete all files in the laser machine and to download only the current design project. Click on the “Del all” button to erase the laser machine memory. Click the “Download current” to load the circctest.ecp from the LaserCut 5.3 software into the laser machine. The compiled file should be read as xx.mol file extension.



12.)The laser machine should be ready to cut... Please remember to check focus and proper cutting material space.