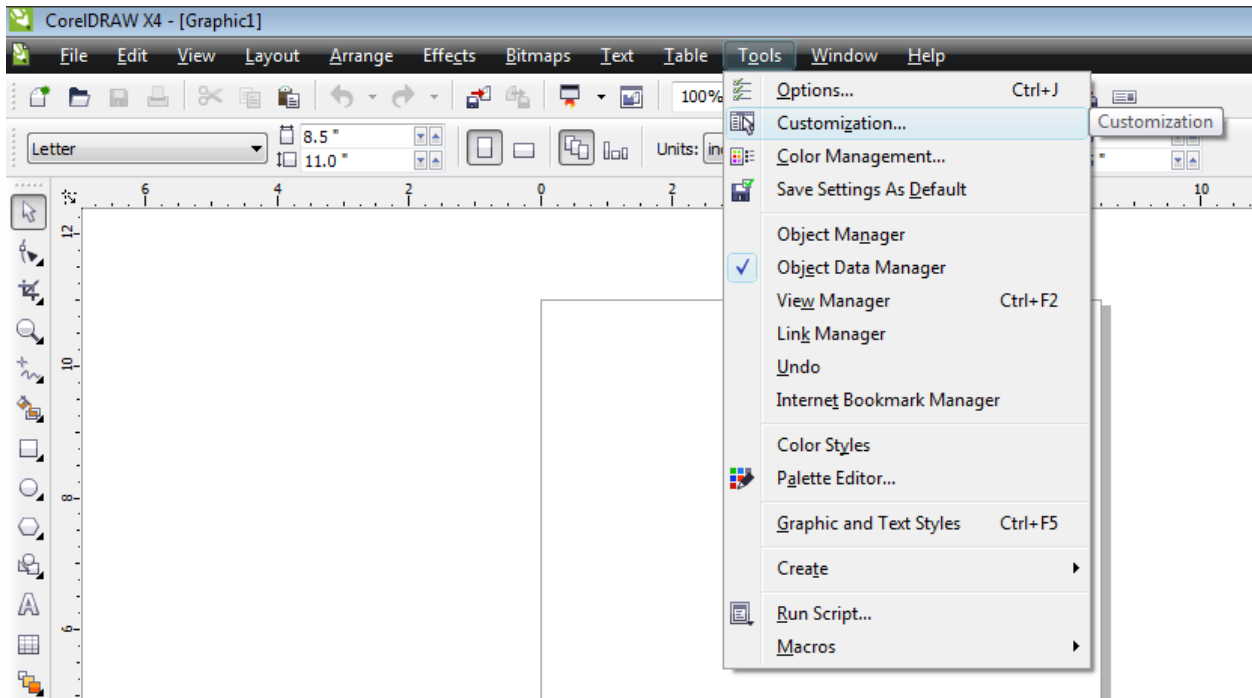
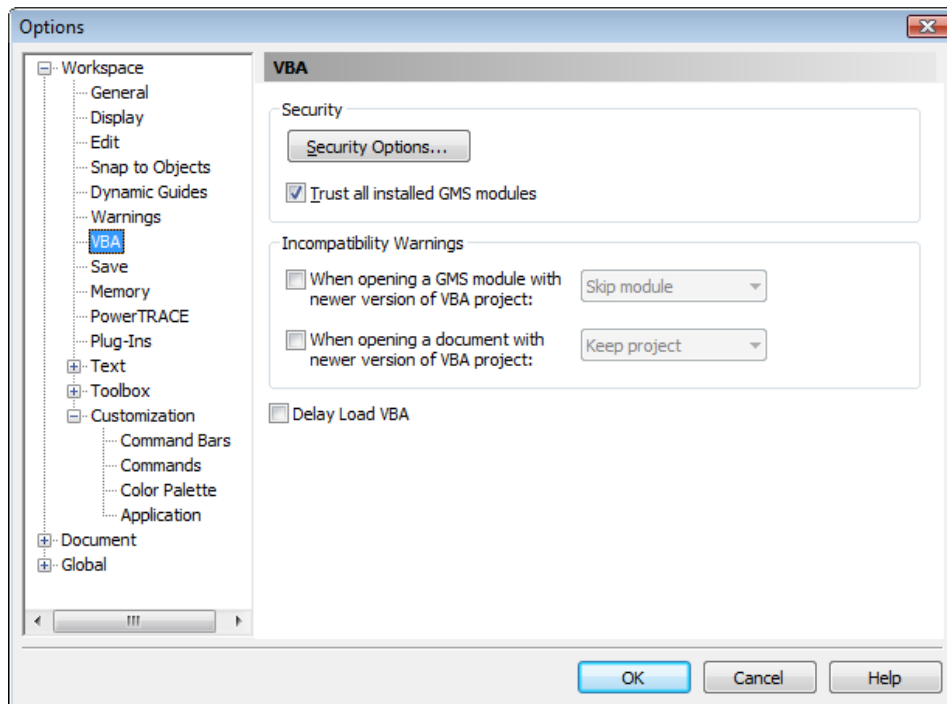


Installing LaserCut Driver to Corel

- 1) Copy the Laser machine installation files from the CD to the computer hard drive.
- 2) Install Corel to the computer. Use the suggested default directories for the Corel Installation.
- 3) Open Corel. Select the menu option for Tools.. Customization...

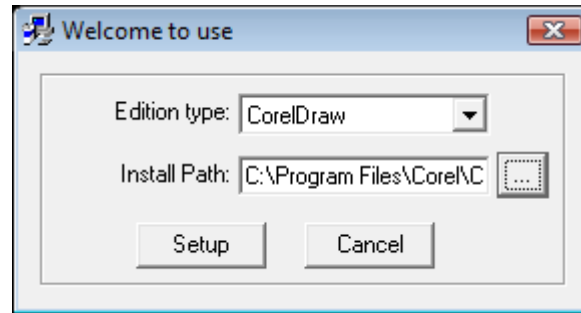


- 4) Set the VBA options to match the following window. Select "OK" to save the settings.

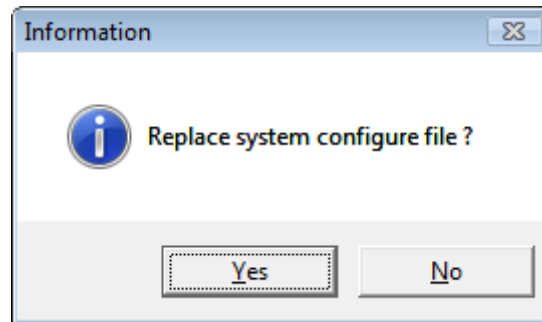


- 5) Close Corel.
- 6) Go to "My Computer" and find the Laser-Machine installation files that you just copied to the computer. Under the "Install" directory, you will find three files. Run the "Setup.exe" program.

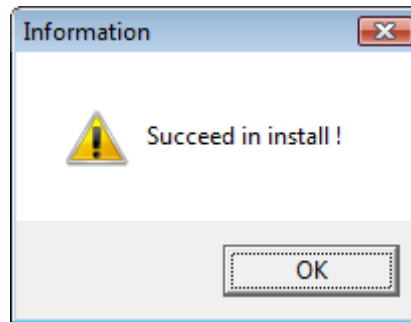
7) Set the program options for “Edition Type: Corel Draw” and “Install Path: C:\Program Files\Corel\CorelDRAW Graphics Suite X4\Program ”.



8) Click on “Setup”.. Do NOT install the Chinese version (unless you speak Chinese). Select “Yes” to replace the system configuration file.



9) The program will copy the files and re-install the drivers for the soft-dog and USB laser interface.



10) Open Corel.. You should see four new icons on the toolbar.

