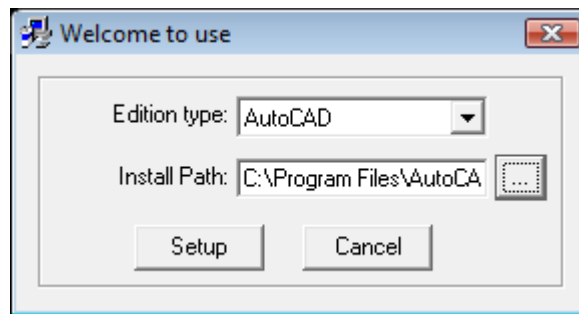
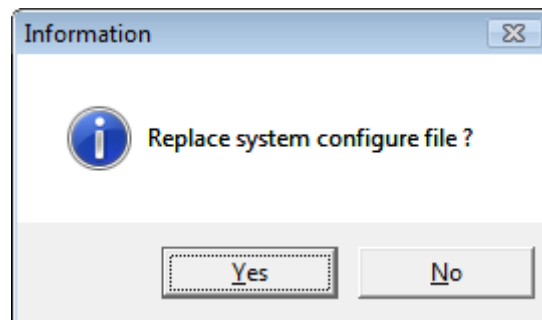


Installing LaserCut Driver to AutoCAD (I am demonstrating with AutoCAD 2004)

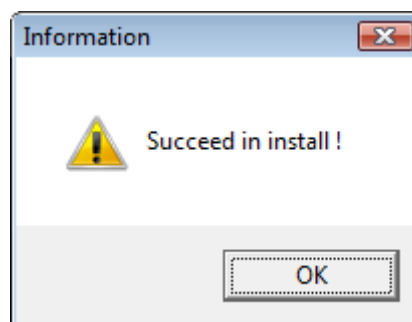
- 1) Copy the Laser machine installation files from the CD to the computer hard drive.
- 2) Make sure the LaserCut 5.3 is installed to the computer. If not the exit this tutorial and install LaserCut 5.3.
- 3) Install AutoCAD to the computer. Use the suggested default directories for the Installation.
- 4) Open the AutoCAD application once to make sure that everything installed correctly.
- 5) Close AutoCAD.
- 6) Go to "My Computer" and find the Laser-Machine installation files that you just copied to the computer. Under the "Install" directory, you will find three files. Run the "Setup.exe" program.
- 7) Set the program options for "Edition Type: AutoCAD" and "Install Path: C:\Program Files\AutoCAD 2004" (or as appropriate for your version.)



- 8) Click on "Setup".. Do NOT install the Chinese version (unless you speak Chinese). Select "Yes" to replace the system configuration file.

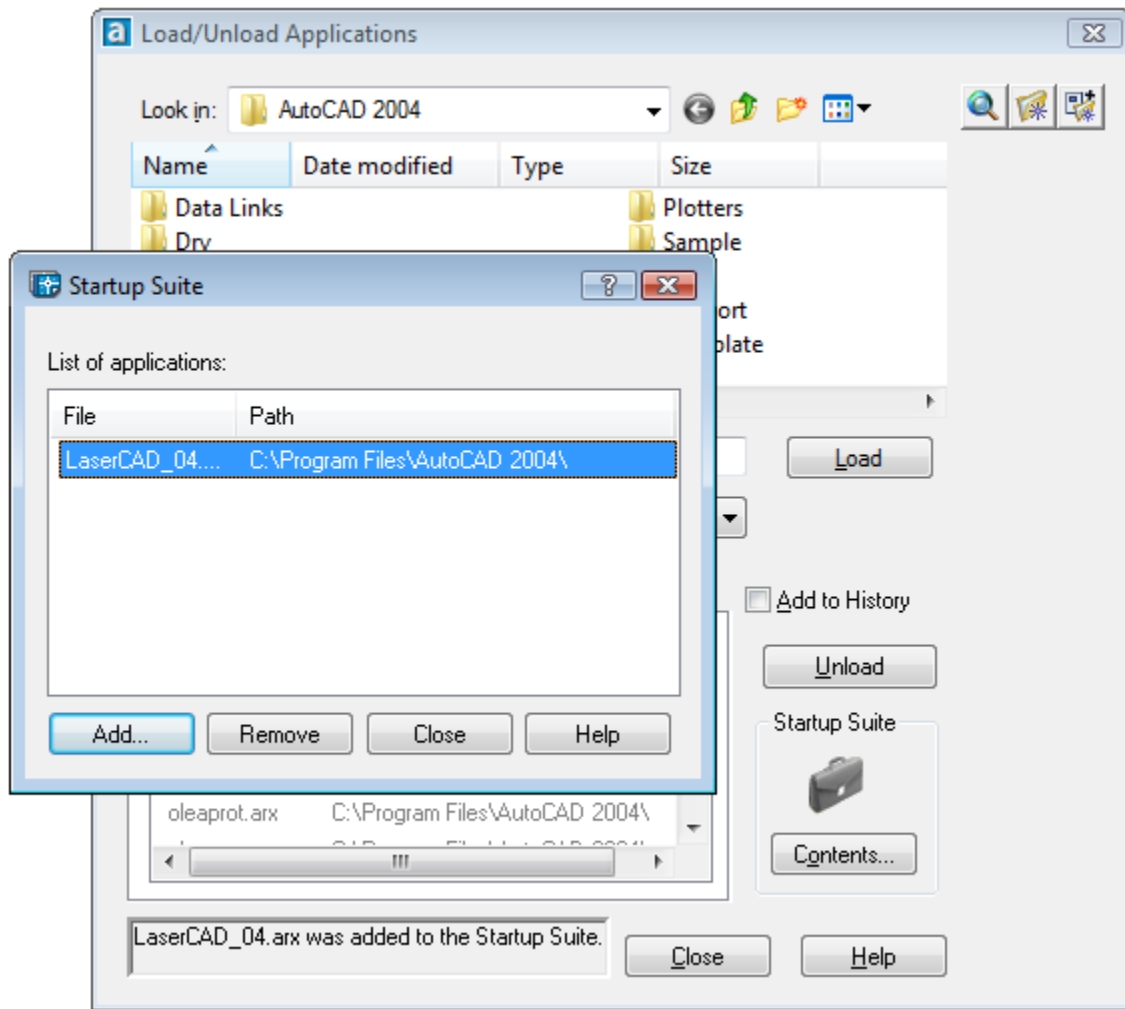


- 9) The program will copy the files and re-install the drivers for the soft-dog and USB laser interface. My computer actually showed that the files failed to completely copy over. This was not such a FINAL issue for me. The file simply did not fully install to AutoCAD's VBA application manager.



10) Open AutoCAD to a new(default) drawing window. You may see a new “Laser” item on the menu bar. If not, then it needs to be loaded (go to step 11).

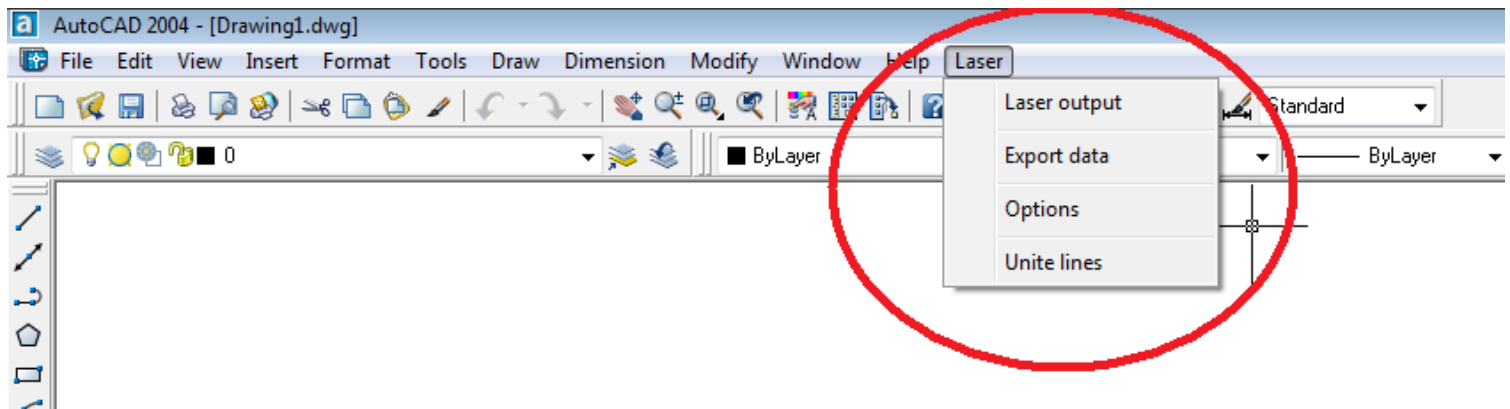
11) Use the AutoCAD command prompt to run the command “apload”.



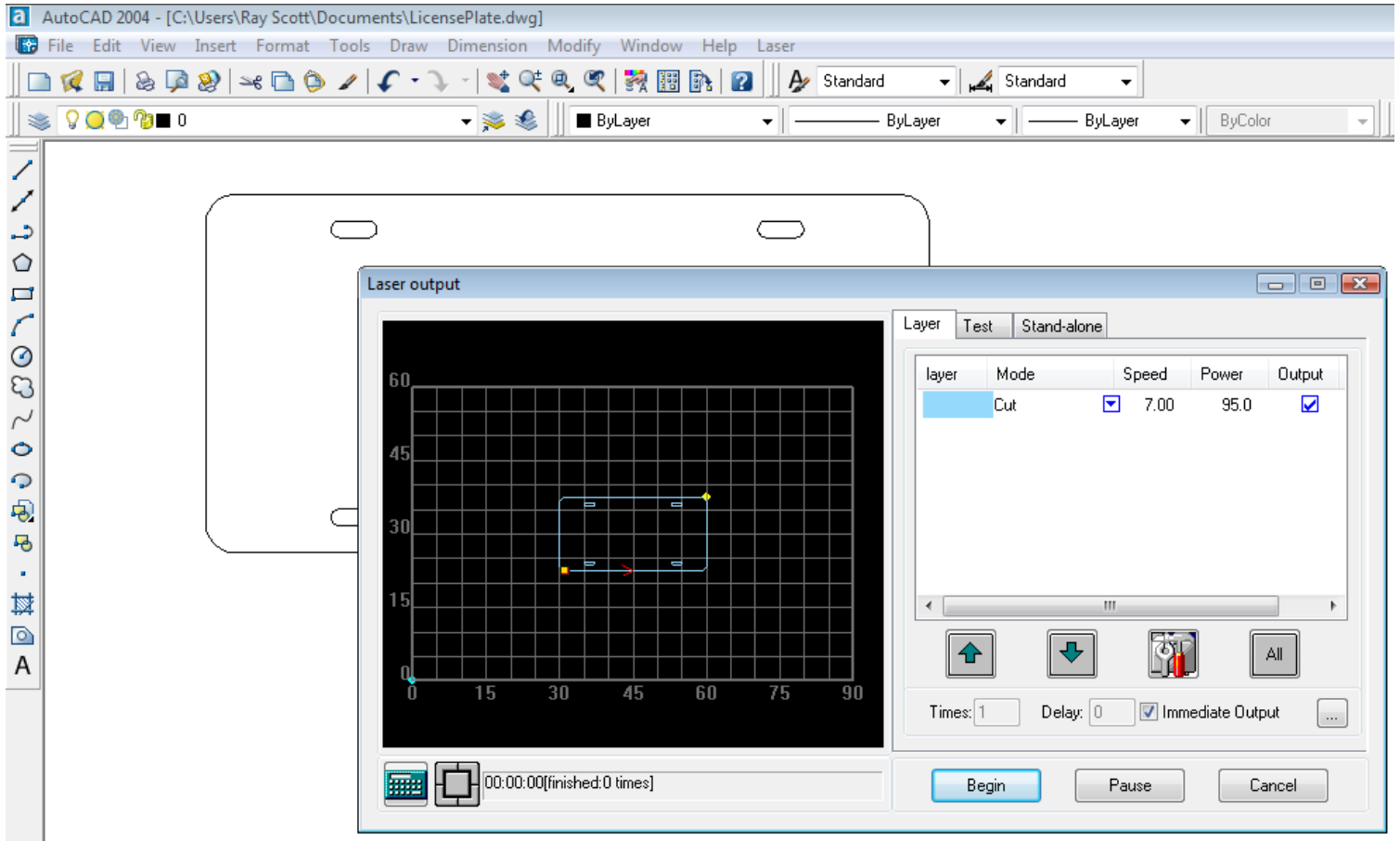
12) Click the briefcase icon to run the startup suite. Click the “Add...” button to add a startup item. Locate the LaserCAD_04.arx file which should be located under the “C:\Program Files\AutoCAD 2004\” directory.

13) Close the “Startup Suite”. Close the “App Loader”

14) Close AutoCAD .. Restart AutoCAD.. You should see a new “Laser” item on the menu bar.



15) You must have a drawing on the screen to activate the laser options. Select "Laser Output" to 1) Set power/speed values, 2) Test, and 3) Use the Stand-Alone Download manager.



... Your LaserCut enabled laser machine is ready to use with AutoCAD.

Scottware.net

Ray Scott